

For Research Use Only

# CoraLite® Plus 647-conjugated ATP1A1 Recombinant antibody

Catalog Number: CL647-83191-6



## Basic Information

Catalog Number: CL647-83191-6	GenBank Accession Number: BC050359	Purification Method: Protein A purification
Concentration: 1000 ug/ml	GeneID (NCBI): 476	CloneNo.: 240160E12
Source: Rabbit	ENSEMBL Gene ID: ENSG00000163399	Recommended Dilutions: IF/ICC 1:50-1:500
Isotype: IgG	UNIPROT ID: P05023	Excitation/Emission maxima wavelengths: 654 nm / 674 nm
Immunogen Catalog Number: AG5763	Full Name: ATPase, Na <sup>+</sup> /K <sup>+</sup> transporting, alpha 1 polypeptide	
	Calculated MW: 113 kDa	
	Observed MW: 100-110 kDa	

## Applications

Tested Applications: IF/ICC	Positive Controls: IF/ICC : A431 cells,
Species Specificity: human, mouse	

## Background Information

ATP1A1 is the catalytic component of Na<sup>+</sup>/K<sup>+</sup>-ATPase which is a membrane bound enzyme primarily involved in generation of Na<sup>+</sup> and K<sup>+</sup> gradients across plasma membranes and in determination of cytoplasmic Na<sup>+</sup> levels. ATP1A1 is a ubiquitously expressed membrane protein and often used as the marker or internal control for plasma membrane protein. For optimal WB detection of this membrane protein, we recommend to avoid boiling the sample after lysis.

## Storage

**Storage:**  
Store at -20°C. Avoid exposure to light. Stable for one year after shipment.  
**Storage Buffer:**  
PBS with 50% glycerol, 0.05% Proclin300, 0.5% BSA, pH7.3  
**Aliquoting is unnecessary for -20°C storage**

For technical support and original validation data for this product please contact:

T: 4006900926

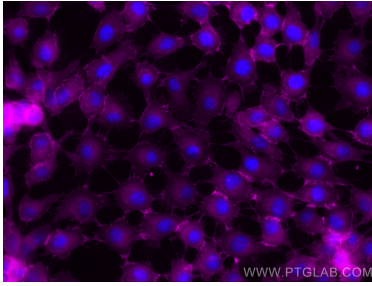
E: [Proteintech-CN@ptglab.com](mailto:Proteintech-CN@ptglab.com)

W: [ptgcn.com](http://ptgcn.com)

This product is exclusively available under Proteintech Group brand and is not available to purchase from any other manufacturer.

---

## Selected Validation Data



Immunofluorescent analysis of (-20°C Methanol) fixed A431 cells using Coralite® Plus 647 ATP1A1 antibody (CL647-83191-6, Clone: 240160E12 ) at dilution of 1:200.