

For Research Use Only

# CoraLite® Plus 647-conjugated STMN2 Recombinant antibody

Catalog Number:CL647-82925-2



## Basic Information

Catalog Number:

CL647-82925-2

Concentration:

1000 ug/ml

Source:

Rabbit

Isotype:

IgG

Immunogen Catalog Number:

AG0929

GenBank Accession Number:

BC006302

GeneID (NCBI):

11075

UNIPROT ID:

Q93045

Full Name:

stathmin-like 2

Calculated MW:

21 kDa

Observed MW:

18-21 kDa

Purification Method:

Protein A purification

CloneNo.:

230110B12

Recommended Dilutions:

IF/ICC: 1:50-1:500

Excitation/Emission maxima

wavelengths:

654 nm / 674 nm

## Applications

Tested Applications:

IF/ICC

Species Specificity:

human, mouse

Positive Controls:

IF/ICC : SH-SY5Y cells,

## Background Information

Stathmin-2 (encoded by STMN2), a member of the stathmin family of proteins, encodes a phosphoprotein that has an important role in microtubule dynamics. The STMN2 protein promotes microtubule dynamics in axonal growth cones, and is thought to play an important role in neurite outgrowth. STMN2 protein is localized in both Golgi and cytosolic compartments. Its expression appears modulated in osteoblasts by nerve growth factor, dexamethasone or RhoA kinase inhibitor Y-27632 which are known effectors of osteogenesis. (PMID: 33841129, PMID: 18611392)

## Storage

Storage:

Store at -20°C. Avoid exposure to light. Stable for one year after shipment.

Storage Buffer:

PBS with 50% glycerol, 0.05% Proclin300, 0.5% BSA, pH7.3

Aliquoting is unnecessary for -20°C storage

For technical support and original validation data for this product please contact:

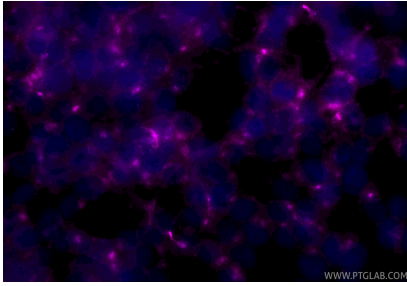
T: 4006900926

E: [Proteintech-CN@ptglab.com](mailto:Proteintech-CN@ptglab.com)

W: [ptgcn.com](http://ptgcn.com)

This product is exclusively available under Proteintech Group brand and is not available to purchase from any other manufacturer.

## Selected Validation Data



Immunofluorescent analysis of (-20°C Ethanol)  
fixed SH-SY5Y cells using CoraLite® Plus 647  
STMN2 antibody (CL647-82925-2, Clone:  
230110B12 ) at dilution of 1:200.