

For Research Use Only

CoraLite® Plus 647-conjugated STAT6 Recombinant monoclonal antibody

Catalog Number: CL647-82630

Featured Product



Basic Information

Catalog Number:

CL647-82630

Source:

Rabbit

Isotype:

IgG

GenBank Accession Number:

BC075852

GeneID (NCBI):

6778

UNIPROT ID:

P42226

Full Name:

signal transducer and activator of transcription 6, interleukin-4 induced

Calculated MW:

94 kDa

Observed MW:

105-110 kDa

Purification Method:

Protein A purification

CloneNo.:

4F19

Recommended Dilutions:

IF/ICC: 1:50-1:500

Excitation/Emission maxima
wavelengths:

654 nm / 674 nm

Applications

Tested Applications:

IF/ICC

Species Specificity:

human, mouse, rat

Positive Controls:

IF/ICC : HeLa cells,

Background Information

STAT6, also named as Signal transducer and activator of transcription 6, is a 847 amino acid protein, which belongs to the transcription factor STAT family. STAT6 forms a homodimer or a heterodimer with a related family member. STAT6 translocates into the nucleus in response to phosphorylation. STAT6 is Involved in IL4/interleukin-4- and IL3/interleukin-3-mediated signaling.

Storage

Storage:

Store at -20°C. Avoid exposure to light. Stable for one year after shipment.

Storage Buffer:

PBS with 50% glycerol, 0.05% Proclin300, 0.5% BSA, pH7.3

Aliquoting is unnecessary for -20°C storage

For technical support and original validation data for this product please contact:

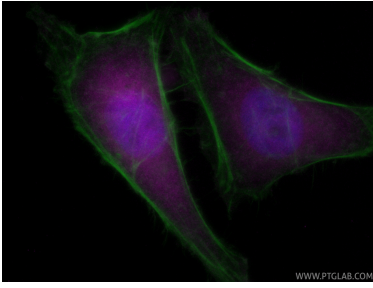
T: 4006900926

E: Proteintech-CN@ptglab.com

W: ptgcn.com

This product is exclusively available under Proteintech Group brand and is not available to purchase from any other manufacturer.

Selected Validation Data



Immunofluorescent analysis of (4% PFA) fixed HeLa cells using CoraLite® Plus 647 STAT6 antibody (CL647-82630, Clone: 4F19) at dilution of 1:200, CL488-phalloidin (green).