

For Research Use Only

# CoraLite® Plus 647-conjugated IBA1 Recombinant antibody

Catalog Number: CL647-81728

1 Publications



## Basic Information

Catalog Number:

CL647-81728

Size:

1000 µg/ml

Source:

Rabbit

Isotype:

IgG

Immunogen Catalog Number:

AG1363

GenBank Accession Number:

BC009474

GeneID (NCBI):

199

ENSEMBL Gene ID:

ENSG00000204472

UNIPROT ID:

P55008

Full Name:

allograft inflammatory factor 1

Calculated MW:

17 kDa

Observed MW:

17 kDa

Purification Method:

Protein A purification

CloneNo.:

4D5

Recommended Dilutions:

IF-P 1:50-1:500

Excitation/Emission maxima

wavelengths:

654 nm / 674 nm

## Applications

Tested Applications:

IF-P, FC (Intra)

Cited Applications:

IF

Species Specificity:

Human, mouse, rat

Cited Species:

mouse

Positive Controls:

IF-P: rat brain tissue,

## Background Information

IBA1 is a 143 amino acid cytoplasmic, inflammation response scaffold protein. It is constitutively expressed in monocytes and macrophages and is known to be involved in macrophage activation. It is a marker of activated macrophage. Expression of IBA1 is up-regulated in activated microglia following facial nerve axotomy, ischemia, and several brain diseases, thereby implicating it in the activated phenotypes of microglia.

## Notable Publications

Author	Pubmed ID	Journal	Application
Jingtian Zhu	39333107	Nat Commun	IF

## Storage

Storage:

Store at -20°C. Avoid exposure to light. Stable for one year after shipment.

Storage Buffer:

PBS with 50% Glycerol, 0.05% Proclin300, 0.5% BSA, pH 7.3.

Aliquoting is unnecessary for -20°C storage

For technical support and original validation data for this product please contact:

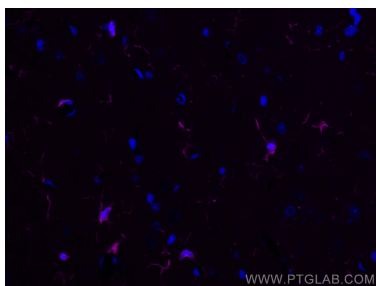
T: 4006900926

E: Proteintech-CN@ptglab.com

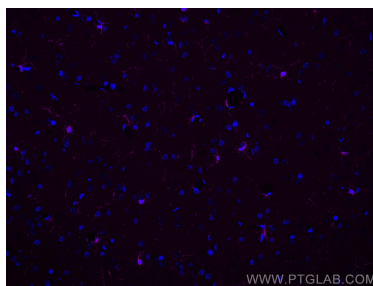
W: ptgcn.com

This product is exclusively available under Proteintech Group brand and is not available to purchase from any other manufacturer.

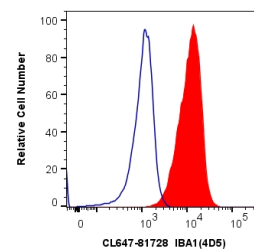
## Selected Validation Data



Immunofluorescent analysis of (4% PFA) fixed rat brain tissue using CoraLite® Plus 647 IBA1 antibody (CL647-81728, Clone: 4D5 ) at dilution of 1:200.



Immunofluorescent analysis of (4% PFA) fixed rat brain tissue using CoraLite® Plus 647 IBA1 antibody (CL647-81728, Clone: 4D5 ) at dilution of 1:200.



1X10<sup>6</sup> THP-1 cells were intracellularly stained with 0.8 ug CoraLite® Plus 647 Anti-Human IBA1 (CL647-81728, Clone:4D5) (red), or 0.8 ug Isotype Control. Cells were fixed with 4% PFA and permeabilized with Flow Cytometry Perm Buffer (PF00011-C).