

For Research Use Only

CoraLite® Plus 647-conjugated GAPDH (Human Specific) Recombinant antibody



Catalog Number: **CL647-80570**

Basic Information

Catalog Number: CL647-80570	GenBank Accession Number: BC004109	Purification Method: Protein A purification
Size: 1000 µg/ml	GeneID (NCBI): 2597	CloneNo.: 2G21
Source: Rabbit	UNIPROT ID: P04406	Recommended Dilutions: WB 1:2000-1:16000
Isotype: IgG	Full Name: glyceraldehyde-3-phosphate dehydrogenase	Excitation/Emission maxima wavelengths: 654 nm / 674 nm
Immunogen Catalog Number: AG0766	Calculated MW: 36 kDa	
	Observed MW: 33 kDa	

Applications

Tested Applications:

FC (Intra), WB

Species Specificity:

Human

Positive Controls:

WB : HEK-293 cells, HeLa cells, Jurkat cells

Background Information

Glyceraldehyde-3-phosphate dehydrogenase (GAPDH) catalyzes the phosphorylation of glyceraldehyde-3-phosphate during glycolysis. GAPDH participates in nuclear events including transcription, binding RNA, RNA transportation, DNA replication, DNA repair and apoptosis. Being stably and constitutively expressed at high levels in most tissues and cells, GAPDH is considered a housekeeping protein. It is widely used as a control for RT-PCR and also loading control in electrophoresis and Western blotting. GAPDH is normally expressed in cellular cytoplasm or membrane, but can occasionally translocate to the nucleus after the addition of post-translational modifications such as S-nitrosylation. This antibody is raised against full length GAPDH of human origin. It can recognize the 36 kDa GAPDH protein in most cells/tissues. In addition, a band below 36 kDa can always be detected as the isoform or spliced product of GAPDH (PMID: 23885286, 23877755, 19368702). Please note that some physiological factors, such as hypoxia and diabetes, increase GAPDH expression in certain cell types. For murine tissue samples, conjugated mouse antibody HRP-60004 and rabbit antibody 10494-1-AP are preferable. 80570-1-RR is human specific.

Storage

Storage:

Store at -20°C. Avoid exposure to light. Stable for one year after shipment.

Storage Buffer:

PBS with 50% Glycerol, 0.05% Proclin300, 0.5% BSA, pH 7.3.

Aliquoting is unnecessary for -20°C storage

For technical support and original validation data for this product please contact:

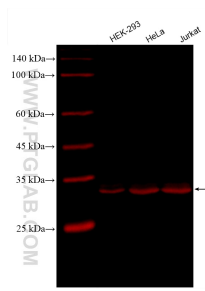
T: 4006900926

E: Proteintech-CN@ptglab.com

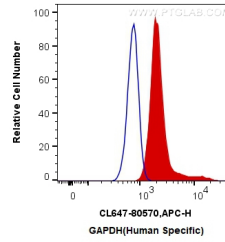
W: ptgcn.com

This product is exclusively available under Proteintech Group brand and is not available to purchase from any other manufacturer.

Selected Validation Data



Various lysates were subjected to SDS PAGE followed by western blot with CL647-80570 (GAPDH (Human Specific) antibody) at dilution of 1:8000 incubated at room temperature for 1.5 hours.



1×10^6 HeLa cells were intracellularly stained with 0.4 μ g CoraLite® Plus 647 Anti-Human GAPDH (Human Specific) (CL647-80570, Clone:2G21) (red), or 0.4 μ g Control Antibody. Cells were fixed with 4% PFA and permeabilized with Flow Cytometry Perm Buffer (PF00011-C).