

CoraLite® Plus 647-conjugated Phospho-RPS6KA1 (Ser380) Recombinant antibody

Catalog Number: **CL647-80108**

Basic Information

Catalog Number: CL647-80108	GenBank Accession Number: BC014966	Purification Method: Protein A purification
Size: 1000 µg/ml	GeneID (NCBI): 6195	CloneNo.: 7F23
Source: Rabbit	UNIPROT ID: Q15418	Excitation/Emission maxima wavelengths: 654 nm / 674 nm
Isotype: IgG	Full Name: ribosomal protein S6 kinase, 90kDa, polypeptide 1	
	Calculated MW: 735 aa, 83 kDa	
	Observed MW: 83-90 kDa	

Applications

Tested Applications:
FC (Intra)

Species Specificity:
human, mouse

Background Information

The 90 kDa ribosomal S6 kinases (RSK1-4) are a family of widely expressed serine/threonine kinases and play an important role in the MAPK signaling cascade and act downstream of ERK1/2 signaling. It can mediate mitogenic and stress-induced activation of the transcription factors CREB1, ETV1/ER81 and NR4A1/NUR77. RSK1 (RPS6KA1) is also designated as p90RSK associated with cellular proliferation, survival and differentiation. It has been reported that the phosphorylation of RPS6KA1 at Ser380 is involved in autophosphorylation by activation of the C-terminal kinase domain. (PMID: 16458888, 30813401, 17259979, 10679322)

Storage

Storage:
Store at -20°C. Avoid exposure to light.

Storage Buffer:
PBS with 50% Glycerol, 0.05% Proclin300, 0.5% BSA, pH 7.3.

Aliquoting is unnecessary for -20°C storage

For technical support and original validation data for this product please contact:

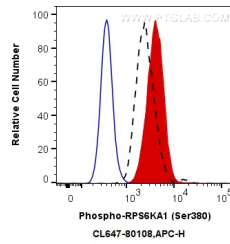
T: 4006900926

E: Proteintech-CN@ptglab.com

W: ptgcn.com

This product is exclusively available under Proteintech Group brand and is not available to purchase from any other manufacturer.

Selected Validation Data



1×10^6 Jurkat cells untreated (dashed lines) or treated with TPA (red) were intracellularly stained with 0.13 μ g CoraLite® Plus 647 Anti-Human Phospho-RPS6KA1 (Ser380) (CL647-80108, Clone:7F23) (red), or 0.13 μ g Control Antibody (blue). Cells were fixed with 4% PFA and permeabilized with 90% MeOH.