

For Research Use Only

# CoraLite® Plus 647-conjugated Centrin 1 Monoclonal antibody

Catalog Number: CL647-68433



## Basic Information

Catalog Number:

CL647-68433

Concentration:

1000 ug/ml

Source:

Mouse

Isotype:

IgG2b

Immunogen Catalog Number:

AG3529

GenBank Accession Number:

BC029515

GeneID (NCBI):

1068

UNIPROT ID:

Q12798

Full Name:

centrin, EF-hand protein, 1

Calculated MW:

172 aa, 20 kDa

Observed MW:

20 kDa

Purification Method:

Protein A purification

CloneNo.:

1G8D10

Recommended Dilutions:

IF/ICC 1:50-1:500

Excitation/Emission maxima wavelengths:

654 nm / 674 nm

## Applications

Tested Applications:

IF/ICC

Species Specificity:

human

Positive Controls:

IF/ICC : hTERT-RPE1 cells,

## Background Information

EF-hand type Ca<sup>2+</sup>-binding proteins consists of several family members, including Centrin-1, Centrin-2 and Centrin-3. The Centrin proteins are ubiquitously expressed cytoskeletal components that show increased expression during cell differentiation. Centrin-1 plays important roles in the determination of centrosome position and segregation, and in the process of microtubule severing. Centrin-1 is localized to the centrosome of interphase cells, and redistributes to the region of the spindle poles during mitosis, reflecting the dynamic behavior of the centrosome during the cell cycle.

## Storage

Storage:

Store at -20°C. Avoid exposure to light. Stable for one year after shipment.

Storage Buffer:

PBS with 50% glycerol, 0.05% Proclin300, 0.5% BSA, pH7.3

Aliquoting is unnecessary for -20°C storage

For technical support and original validation data for this product please contact:

T: 4006900926

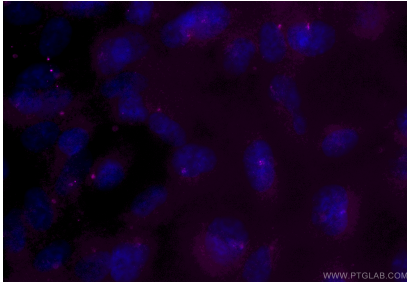
E: [Proteintech-CN@ptglab.com](mailto:Proteintech-CN@ptglab.com)

W: [ptgcn.com](http://ptgcn.com)

This product is exclusively available under Proteintech Group brand and is not available to purchase from any other manufacturer.

---

## Selected Validation Data



Immunofluorescent analysis of (-20°C Methanol)  
fixed hTERT-RPE1 cells using CoraLite® Plus 647  
Centrin 1 antibody (CL647-68433, Clone: 1G8D10 )  
at dilution of 1:100.