

For Research Use Only

# CoraLite® Plus 647-conjugated Synaptophysin Monoclonal antibody



Catalog Number: CL647-67864

## Basic Information

<b>Catalog Number:</b> CL647-67864	<b>GenBank Accession Number:</b> BC064550	<b>Purification Method:</b> Protein G purification
<b>Size:</b> 1000 µg/ml	<b>GeneID (NCBI):</b> 6855	<b>CloneNo.:</b> 4E12C4
<b>Source:</b> Mouse	<b>UNIPROT ID:</b> P08247	<b>Recommended Dilutions:</b> IF 1:50-1:500
<b>Isotype:</b> IgG1	<b>Full Name:</b> synaptophysin	<b>Excitation/Emission maxima wavelengths:</b> 654 nm / 674 nm
<b>Immunogen Catalog Number:</b> AG11803	<b>Calculated MW:</b> 313 aa, 34 kDa	

## Applications

<b>Tested Applications:</b> IF-P	<b>Positive Controls:</b> IF : mouse brain tissue,
<b>Species Specificity:</b> Human, Pig, Mouse, Rat	

## Background Information

Synaptophysin (SYP, also known as major synaptic vesicle protein p38) is a 38-kDa integral membrane glycoprotein that regulates synaptic vesicle endocytosis. It is the most abundant synaptic vesicle protein by mass. Synaptophysin is present in neuroendocrine cells and neurons that participate in synaptic transmission. Synaptophysin is a useful marker for identification of neuroendocrine cells and neoplasms. (PMID: 3010302; 21658579)

## Storage

**Storage:**  
Store at -20°C. Avoid exposure to light.  
**Storage Buffer:**  
PBS with 50% Glycerol, 0.05% Proclin300, 0.5% BSA, pH 7.3.  
**Aliquoting is unnecessary for -20°C storage**

For technical support and original validation data for this product please contact:

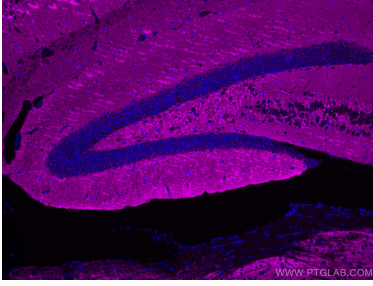
T: 4006900926

E: [Proteintech-CN@ptglab.com](mailto:Proteintech-CN@ptglab.com)

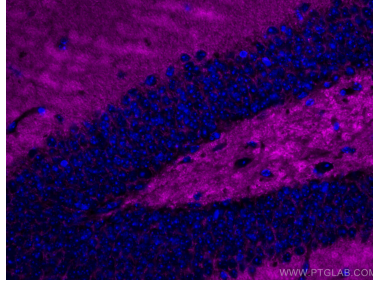
W: [ptgcn.com](http://ptgcn.com)

**This product is exclusively available under Proteintech Group brand and is not available to purchase from any other manufacturer.**

## Selected Validation Data



Immunofluorescent analysis of (4% PFA) fixed mouse brain tissue using CoraLite® Plus 647 Synaptophysin antibody (CL647-67864, Clone: 4E12C4 ) at dilution of 1:200.



Immunofluorescent analysis of (4% PFA) fixed mouse brain tissue using CoraLite® Plus 647 Synaptophysin antibody (CL647-67864, Clone: 4E12C4 ) at dilution of 1:200.