

# CoraLite® Plus 647-conjugated PSMA7 Monoclonal antibody

Catalog Number: **CL647-67817**

## Basic Information

**Catalog Number:**

CL647-67817

**Size:**

1000 µg/ml

**Source:**

Mouse

**Isotype:**

IgG1

**Immunogen Catalog Number:**

AG7821

**GenBank Accession Number:**

BC004427

**GeneID (NCBI):**

5688

**UNIPROT ID:**

O14818

**Full Name:**

proteasome (prosome, macropain)  
subunit, alpha type, 7

**Calculated MW:**

28 kDa

**Observed MW:**

28-30 kDa

**Purification Method:**

Protein G purification

**CloneNo.:**

1F2C6

**Excitation/Emission maxima  
wavelengths:**

654 nm / 674 nm

## Applications

**Tested Applications:**

FC (Intra)

**Species Specificity:**

human, mouse, rat

## Background Information

PSMA7 (Proteasome subunit alpha type-7) is also named as HSPC and belongs to the peptidase T1A family. It is an  $\alpha$ -type subunit of the 20S proteasome core complex and participates in degrading proteins through ubiquitin-proteasome pathway (UPP) which plays an important role in the regulation of cell proliferation or cell cycle control, transcriptional regulation, immune and stress response, cell differentiation, and apoptosis. (PMID: 19442227).

## Storage

**Storage:**

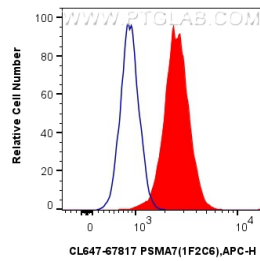
Store at -20°C. Avoid exposure to light. Stable for one year after shipment.

**Storage Buffer:**

PBS with 50% Glycerol, 0.05% Proclin300, 0.5% BSA, pH 7.3.

Aliquoting is unnecessary for -20°C storage

## Selected Validation Data



1X10<sup>6</sup> HeLa cells were intracellularly stained with 0.4 ug CoraLite® Plus 647 Anti-Human PSMA7 (CL647-67817, Clone:1F2C6) (red), or 0.4 ug CoraLite® Plus 647 Mouse IgG1 Isotype Control (MOPC-21) (CL647-65124, Clone: MOPC-21) (blue). Cells were fixed and permeabilized with True-Nuclear Transcription Factor Buffer Set.