

For Research Use Only

CoraLite® Plus 647-conjugated LARP1 Monoclonal antibody



Catalog Number:CL647-67810

Basic Information

Catalog Number:

CL647-67810

Size:

1000 µg/ml

Source:

Mouse

Isotype:

IgG1

Immunogen Catalog Number:

AG29993

GenBank Accession Number:

BC033856

GeneID (NCBI):

23367

UNIPROT ID:

Q6PKG0

Full Name:

La ribonucleoprotein domain family,
member 1

Calculated MW:

1096 aa, 124 kDa

Observed MW:

140-150 kDa

Purification Method:

Protein G purification

CloneNo.:

2E9F2

Recommended Dilutions:

IF 1:50-1:500

Excitation/Emission maxima

wavelengths:

654 nm / 674 nm

Applications

Tested Applications:

IF/ICC

Species Specificity:

Human, mouse, rat

Positive Controls:

IF : HepG2 cells,

Background Information

LARP1, full named as La-related Protein 1, is an oncogenic RNA-binding protein required for ribosome biogenesis and cancer cell survival. (PMID: 32286153)It's has been proposed to function downstream of mTORC1 to regulate the translation of 5'TOP mRNAs such as those encoding ribosome proteins (RP). (PMID: 28650797) LARP1 has 2 isoforms with MW of 123-150KDa. With CL647, immunoflorescence detected location in cytoplasm.

Storage

Storage:

Store at -20°C. Avoid exposure to light.

Storage Buffer:

PBS with 50% Glycerol, 0.05% Proclin300, 0.5% BSA, pH 7.3.

Aliquoting is unnecessary for -20°C storage

For technical support and original validation data for this product please contact:

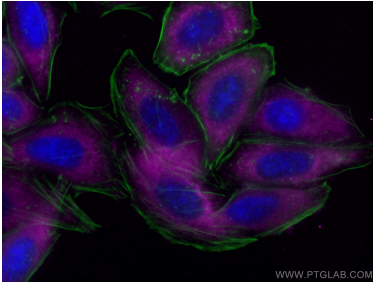
T: 4006900926

E: Proteintech-CN@ptglab.com

W: ptgcn.com

This product is exclusively available under Proteintech Group brand and is not available to purchase from any other manufacturer.

Selected Validation Data



Immunofluorescent analysis of (-20°C Methanol) fixed HepG2 cells using CoraLite® Plus 647 LARP1 antibody (CL647-67810, Clone: 2E9F2) at dilution of 1:100, CoraLite®488 Beta Actin antibody (CL488-66009, Clone: 2D4H5, green). DAPI (blue)