

For Research Use Only

# CoraLite® Plus 647-conjugated MFG-E8 Monoclonal antibody



Catalog Number:CL647-67797

## Basic Information

Catalog Number:

CL647-67797

Size:

1000 µg/ml

Source:

Mouse

Isotype:

IgG2b

Immunogen Catalog Number:

AG30666

GenBank Accession Number:

BC003610

GeneID (NCBI):

4240

UNIPROT ID:

Q08431

Full Name:

milk fat globule-EGF factor 8 protein

Calculated MW:

43 kDa

Observed MW:

43 kDa

Purification Method:

Protein A purification

CloneNo.:

1A1A9

Excitation/Emission maxima  
wavelengths:

654 nm / 674 nm

## Applications

Tested Applications:

FC (Intra)

Species Specificity:

Human

## Background Information

Milk fat globule-epidermal growth factor-factor 8 (MFG-E8), also known as lactadherin, is a multifunctional secreted glycoprotein exhibiting versatile functions in cell physiology affecting health and diseases. It plays roles in clearance of apoptotic cells, anti-inflammatory, wound healing, arterial remodeling, angiogenesis, enhancing tumorigenicity and cancer metastasis (PMID: 23972256). MFG-E8 consists of two-repeated EGF-like domains, a mucin-like domain and two-repeated discoïdin-like domains (C-domains), and contains an integrin-binding motif (RGD sequence) in the EGF-like domain (PMID: 11856354). It shows ubiquitous pattern of expression in various types of cells and tissues. Altered expression of MFG-E8 causes disruptions of homeostasis and is correlated with a number of diseases (PMID: 27429513).

## Storage

Storage:

Store at -20°C. Avoid exposure to light. Stable for one year after shipment.

Storage Buffer:

PBS with 50% Glycerol, 0.05% Proclin300, 0.5% BSA, pH 7.3.

Aliquoting is unnecessary for -20°C storage

For technical support and original validation data for this product please contact:

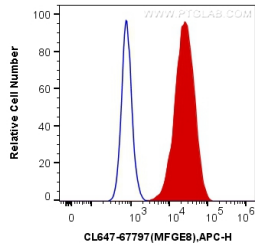
T: 4006900926

E: [Proteintech-CN@ptglab.com](mailto:Proteintech-CN@ptglab.com)

W: [ptgcn.com](http://ptgcn.com)

This product is exclusively available under Proteintech Group brand and is not available to purchase from any other manufacturer.

## Selected Validation Data



1X10<sup>6</sup> MDA-MB-231 cells were intracellularly stained with 0.4 ug CoraLite® Plus 647 Anti-Human MFGE8 (CL647-67797, Clone:1A1A9) (red), or 0.4 ug Control Antibody. Cells were fixed with 4% PFA and permeabilized with Flow Cytometry Perm Buffer (PF00011-C).