

For Research Use Only

# CoraLite® Plus 647-conjugated IgG lambda chain Monoclonal antibody



Catalog Number: **CL647-67762**

## Basic Information

Catalog Number:

**CL647-67762**

Size:

**1000 µg/ml**

Source:

**Mouse**

Isotype:

**IgG2a**

Immunogen Catalog Number:

**AG14783**

GenBank Accession Number:

**BC007782**

GeneID (NCBI):

**3537**

Full Name:

**immunoglobulin lambda constant 1  
(Mcg marker)**

Calculated MW:

**233 aa, 25 kDa**

Observed MW:

**~25 kDa**

Purification Method:

**Protein A purification**

CloneNo.:

**1D12B5**

Recommended Dilutions:

**IF-P 1:200-1:800**

Excitation/Emission maxima  
wavelengths:

**654 nm / 674 nm**

## Applications

Tested Applications:

**IF-P**

Species Specificity:

**Human**

Positive Controls:

**IF-P: human tonsillitis tissue,**

## Background Information

This antibody detects Lambda chain of human IgG.

## Storage

Storage:

**Store at -20°C. Avoid exposure to light.**

Storage Buffer:

**PBS with 50% Glycerol, 0.05% Proclin300, 0.5% BSA, pH 7.3.**

**Aliquoting is unnecessary for -20°C storage**

For technical support and original validation data for this product please contact:

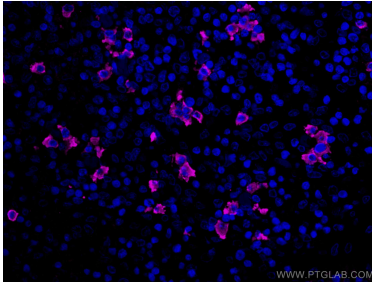
T: 4006900926

E: [Proteintech-CN@ptglab.com](mailto:Proteintech-CN@ptglab.com)

W: [ptgcn.com](http://ptgcn.com)

**This product is exclusively available under Proteintech Group brand and is not available to purchase from any other manufacturer.**

## Selected Validation Data



Immunofluorescent analysis of (4% PFA) fixed human tonsillitis tissue using CoraLite® Plus 647 Human IgG lambda chain antibody (CL647-67762, Clone: 1D12B5 ) at dilution of 1:400.