

For Research Use Only

CoraLite® Plus 647-conjugated IgG Kappa chain Monoclonal antibody



Catalog Number: **CL647-67761**

Basic Information

Catalog Number:

CL647-67761

Size:

1000 µg/ml

Source:

Mouse

Isotype:

IgG1

GenBank Accession Number:

GeneID (NCBI):

Full Name:

Calculated MW:

155 kDa

Observed MW:

~25 kDa

Purification Method:

Protein G purification

CloneNo.:

4D11F7

Recommended Dilutions:

WB 1:500-1:2000

Excitation/Emission maxima
wavelengths:

654 nm / 674 nm

Applications

Tested Applications:

WB

Species Specificity:

Human

Positive Controls:

WB : human plasma,

Background Information

This antibody detects the Kappa chain of human IgG,

Storage

Storage:

Store at -20°C. Avoid exposure to light. Stable for one year after shipment.

Storage Buffer:

PBS with 50% Glycerol, 0.05% Proclin300, 0.5% BSA, pH 7.3.

Aliquoting is unnecessary for -20°C storage

For technical support and original validation data for this product please contact:

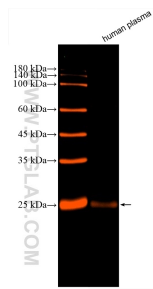
T: 4006900926

E: Proteintech-CN@ptglab.com

W: ptgcn.com

This product is exclusively available under Proteintech Group brand and is not available to purchase from any other manufacturer.

Selected Validation Data



Human plasma were subjected to SDS PAGE followed by western blot with CL647-67761 (Human IgG Kappa chain antibody) at dilution of 1:1000 incubated at room temperature for 1.5 hours.