

For Research Use Only

# CoraLite® Plus 647-conjugated EED Monoclonal antibody



Catalog Number:CL647-67756

## Basic Information

<b>Catalog Number:</b> CL647-67756	<b>GenBank Accession Number:</b> BC068995	<b>Purification Method:</b> Protein A purification
<b>Size:</b> 1000 µg/ml	<b>GeneID (NCBI):</b> 8726	<b>CloneNo.:</b> 1D11D4
<b>Source:</b> Mouse	<b>UNIPROT ID:</b> O75530	<b>Recommended Dilutions:</b> IF 1:300-1:1200
<b>Isotype:</b> IgG2b	<b>Full Name:</b> embryonic ectoderm development	<b>Excitation/Emission maxima wavelengths:</b> 654 nm / 674 nm
<b>Immunogen Catalog Number:</b> AG10369	<b>Calculated MW:</b> 466 aa, 53 kDa	

## Applications

<b>Tested Applications:</b> FC (Intra), IF-P	<b>Positive Controls:</b> IF : mouse testis tissue,
<b>Species Specificity:</b> Human, mouse	

## Background Information

EED is a member of the Polycomb-group (PcG) family. PcG family members form multimeric protein complexes, which are involved in maintaining the transcriptional repressive state of genes over successive cell generations. This protein interacts with enhancer of zeste 2, the cytoplasmic tail of integrin beta7, immunodeficiency virus type 1 (HIV-1) MA protein, and histone deacetylase proteins. This protein mediates repression of gene activity through histone deacetylation, and may act as a specific regulator of integrin function. EED has three isoforms, with the molecular weight of isoforms 1/2/3: 50/53/46 kDa.

## Storage

**Storage:**  
Store at -20°C. Avoid exposure to light.  
**Storage Buffer:**  
PBS with 50% Glycerol, 0.05% Proclin300, 0.5% BSA, pH 7.3.  
Aliquoting is unnecessary for -20°C storage

For technical support and original validation data for this product please contact:

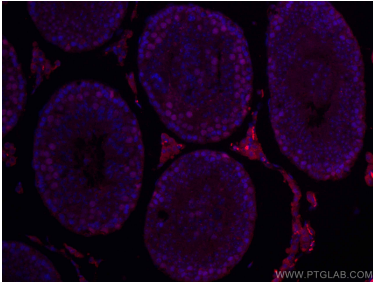
T: 4006900926

E: Proteintech-CN@ptglab.com

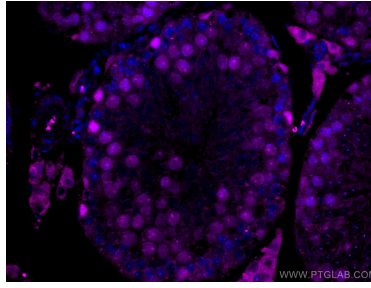
W: ptgcn.com

**This product is exclusively available under Proteintech Group brand and is not available to purchase from any other manufacturer.**

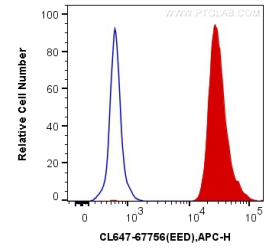
## Selected Validation Data



Immunofluorescent analysis of (4% PFA) fixed mouse testis tissue using CoraLite® Plus 647 EED antibody (CL647-67756, Clone: 1D11D4) at dilution of 1:200.



Immunofluorescent analysis of (4% PFA) fixed mouse testis tissue using CoraLite® Plus 647 EED antibody (CL647-67756, Clone: 1D11D4) at dilution of 1:200.



1X10<sup>6</sup> HeLa cells were intracellularly stained with 0.4 ug CoraLite® Plus 647 Anti-Human EED (CL647-67756, Clone:1D11D4) (red), or 0.4 ug Control Antibody. Cells were fixed and permeabilized with Transcription Factor Staining Buffer Kit (PF00011).