

For Research Use Only

CoraLite® Plus 647-conjugated Cyclin B2 Monoclonal antibody

Catalog Number: CL647-67726



Basic Information

Catalog Number: CL647-67726	GenBank Accession Number: BC105086	Purification Method: Protein A purification
Size: 1000 µg/ml	GeneID (NCBI): 9133	CloneNo.: 2G8B7
Source: Mouse	UNIPROT ID: O95067	Recommended Dilutions: IF-P 1:50-1:500
Isotype: IgG2a	Full Name: cyclin B2	Excitation/Emission maxima wavelengths: 654 nm / 674 nm
Immunogen Catalog Number: AG16329	Calculated MW: 398 aa, 45 kDa	

Applications

Tested Applications: IF-P	Positive Controls: IF-P : mouse testis tissue,
Species Specificity: human, mouse	

Background Information

Cyclin B2 (CCNB2) is a member of cyclin family proteins, which regulate the activities of cyclin dependent kinases (CDKs) and different cyclins function spatially and temporally in specific phases of the cell cycle. Cyclin B2 serves a key role in progression of G2/M transition. Cyclin B2 has been found to be up-regulated in a variety of human cancers, such as adrenocortical carcinoma, breast carcinoma, colorectal adenocarcinoma, pituitary adenoma and gastric cancer. The aberrant expression of Cyclin B2 deregulates spindle checkpoints in the cell cycle and results in chromosomal instability (CIN), one of the signature phenotypes of most cancers. Moreover, serum circulating Cyclin B2 mRNA expression has been found increased in cancer patients and associated with cancer stage and metastasis status.

Storage

Storage:
Store at -20°C. Avoid exposure to light. Stable for one year after shipment.
Storage Buffer:
PBS with 50% Glycerol, 0.05% Proclin300, 0.5% BSA, pH 7.3.
Aliquoting is unnecessary for -20°C storage

For technical support and original validation data for this product please contact:

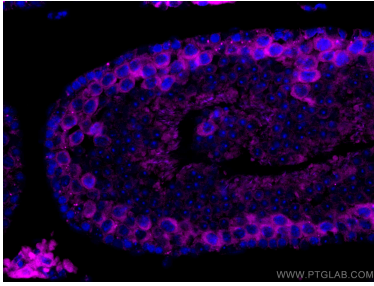
T: 4006900926

E: Proteintech-CN@ptglab.com

W: ptgcn.com

This product is exclusively available under Proteintech Group brand and is not available to purchase from any other manufacturer.

Selected Validation Data



Immunofluorescent analysis of (4% PFA) fixed mouse testis tissue using CoraLite® Plus 647 Cyclin B2 antibody (CL647-67726, Clone: 2G8B7) at dilution of 1:200.