

For Research Use Only

# CoraLite® Plus 647-conjugated cyclin B1 Monoclonal antibody



Catalog Number:CL647-67686

## Basic Information

Catalog Number:

CL647-67686

Size:

1000 µg/ml

Source:

Mouse

Isotype:

IgG1

Immunogen Catalog Number:

AG29444

GenBank Accession Number:

BC006510

GeneID (NCBI):

891

UNIPROT ID:

P14635

Full Name:

cyclin B1

Calculated MW:

48 kDa

Observed MW:

55 kDa

Purification Method:

Protein G purification

CloneNo.:

1F3G11

Excitation/Emission maxima wavelengths:

654 nm / 674 nm

## Applications

Tested Applications:

FC (Intra)

Species Specificity:

Human, mouse, rat

## Background Information

Cyclin B1 is a regulatory protein involved in mitosis. The gene product complexes with p34(cdc2) to form the maturation-promoting factor (MPF). Two alternative transcripts have been found, a constitutively expressed transcript and a cell cycle-regulated transcript, that is expressed predominantly during G2/M phase of the cell cycle. The different transcripts result from the use of alternate transcription initiation sites. The antibody is specific to CCNB1. We got a 55-60 kDa band in western blotting maybe due to phosphorylation.

## Storage

Storage:

Store at -20°C. Avoid exposure to light. Stable for one year after shipment.

Storage Buffer:

PBS with 50% Glycerol, 0.05% Proclin300, 0.5% BSA, pH 7.3.

Aliquoting is unnecessary for -20°C storage

For technical support and original validation data for this product please contact:

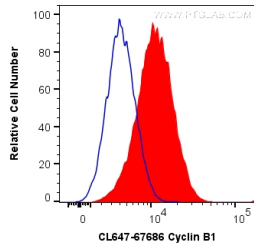
T: 4006900926

E: [Proteintech-CN@ptglab.com](mailto:Proteintech-CN@ptglab.com)

W: [ptgcn.com](http://ptgcn.com)

**This product is exclusively available under Proteintech Group brand and is not available to purchase from any other manufacturer.**

## Selected Validation Data



1X10<sup>6</sup> HeLa cells were intracellularly stained with 0.2 ug Coralite® Plus 647 Anti-Human cyclin B1 (CL647-67686, Clone:1F3G11) (red), or 0.2 ug isotype control (blue). Cells were fixed with 4% PFA and permeabilized with Flow Cytometry Perm Buffer (PF00011-C).