

# CoraLite<sup>®</sup> Plus 647-conjugated ERP29 Monoclonal antibody

Catalog Number: **CL647-67675**

## Basic Information

**Catalog Number:**

CL647-67675

**Size:**1000  $\mu$ g/ml**Source:**

Mouse

**Isotype:**

IgG2a

**Immunogen Catalog Number:**

AG30262

**GenBank Accession Number:**

BC101495

**GeneID (NCBI):**

10961

**UNIPROT ID:**

P30040

**Full Name:**

endoplasmic reticulum protein 29

**Calculated MW:**

261 aa, 29 kDa

**Observed MW:**

29 kDa

**Purification Method:**

Protein A purification

**CloneNo.:**

1H8B2

**Recommended Dilutions:**

IF-P 1:50-1:500

**Excitation/Emission maxima  
wavelengths:**

654 nm / 674 nm

## Applications

**Tested Applications:**

IF-P

**Species Specificity:**

Human, Mouse, Rat

**Positive Controls:**

IF-P : human kidney tissue,

## Background Information

Endoplasmic reticulum resident protein 29 (ERP29) is a 29-kDa endoplasmic reticulum (ER) luminal protein. Structurally ERp29 is related to protein disulfide isomerases (PDI). However, it lacks the thioredoxin motif, suggesting that this protein does not function as a disulfide isomerase (PMID: 15500441). ERP29 plays an important role in the processing of secretory proteins within the (ER), possibly by participating in the folding of proteins in the ER. The secretion of thyroglobulin (TG) was found to be strongly regulated by ERP29 (PMID: 16380091).

## Storage

**Storage:**

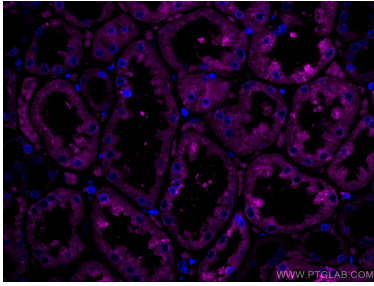
Store at -20°C. Avoid exposure to light.

**Storage Buffer:**

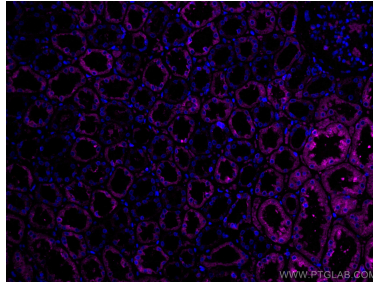
PBS with 50% Glycerol, 0.05% Proclin300, 0.5% BSA, pH 7.3.

Aliquoting is unnecessary for -20°C storage

## Selected Validation Data



Immunofluorescent analysis of (4% PFA) fixed human kidney tissue using Coralite® Plus 647 ERP29 antibody (CL647-67675, Clone: 1H8B2 ) at dilution of 1:200.



Immunofluorescent analysis of (4% PFA) fixed human kidney tissue using Coralite® Plus 647 ERP29 antibody (CL647-67675, Clone: 1H8B2 ) at dilution of 1:200.