

For Research Use Only

CoraLite® Plus 647-conjugated P2RY1 Monoclonal antibody



Catalog Number: **CL647-67654**

Basic Information

Catalog Number:

CL647-67654

Size:

1000 µg/ml

Source:

Mouse

Isotype:

IgG1

Immunogen Catalog Number:

AG12762

GenBank Accession Number:

BC074785

GeneID (NCBI):

5028

UNIPROT ID:

P47900

Full Name:

purinergic receptor P2Y, G-protein coupled, 1

Calculated MW:

373 aa, 42 kDa

Purification Method:

Protein G purification

CloneNo.:

1A1F3

Recommended Dilutions:

IF-P 1:50-1:500

Excitation/Emission maxima
wavelengths:

654 nm / 674 nm

Applications

Tested Applications:

IF-P

Species Specificity:

Human, mouse

Positive Controls:

IF-P: mouse brain tissue,

Background Information

Storage

Storage:

Store at -20°C. Avoid exposure to light.

Storage Buffer:

PBS with 50% Glycerol, 0.05% Proclin300, 0.5% BSA, pH 7.3.

Aliquoting is unnecessary for -20°C storage

For technical support and original validation data for this product please contact:

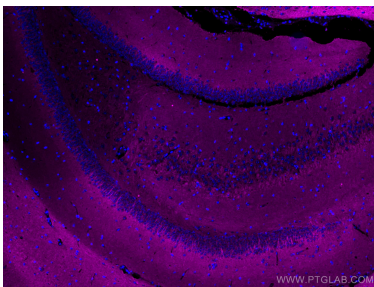
T: 4006900926

E: Proteintech-CN@ptglab.com

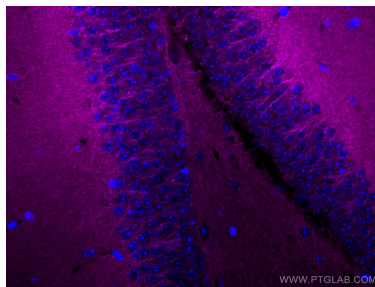
W: ptgcn.com

This product is exclusively available under Proteintech Group brand and is not available to purchase from any other manufacturer.

Selected Validation Data



Immunofluorescent analysis of (4% PFA) fixed mouse brain tissue using CoraLite® Plus 647 P2RY1 antibody (CL647-67654, Clone: 1A1F3) at dilution of 1:200.



Immunofluorescent analysis of (4% PFA) fixed mouse brain tissue using CoraLite® Plus 647 P2RY1 antibody (CL647-67654, Clone: 1A1F3) at dilution of 1:200.