

For Research Use Only

CoraLite® Plus 647-conjugated IgD Monoclonal antibody



Catalog Number: CL647-67538

Basic Information

Catalog Number:

CL647-67538

Size:

1000 µg/ml

Source:

Mouse

Isotype:

IgG2a

Immunogen Catalog Number:

AG9614

GenBank Accession Number:

BC021276

GeneID (NCBI):

3495

Full Name:

immunoglobulin heavy constant
delta

Calculated MW:

573 aa, 63 kDa

Observed MW:

55-70 kDa

Purification Method:

Protein A purification

CloneNo.:

1D1B12

Recommended Dilutions:

IF 1:200-1:800

Excitation/Emission maxima
wavelengths:

654 nm / 674 nm

Applications

Tested Applications:

IF-P

Species Specificity:

Human

Positive Controls:

IF : human tonsillitis tissue,

Background Information

IgD is the major antigen receptor isotype on the surface of most peripheral B-cells. The function of IgD is to signal the B cells to be activated. The relative molecular mass and half-life of secreted IgD is 185 kDa and 2.8 days, respectively. Secreted IgD is produced as a monomeric antibody with two heavy chains of the delta (δ) class, and two Ig light chains. This antibody detects the heavy chain (55-70 kDa) of IgD and secreted IgD (185 kDa).

Storage

Storage:

Store at -20°C. Avoid exposure to light.

Storage Buffer:

PBS with 50% Glycerol, 0.05% Proclin300, 0.5% BSA, pH 7.3.

Aliquoting is unnecessary for -20°C storage

For technical support and original validation data for this product please contact:

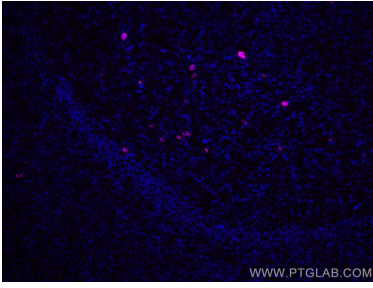
T: 4006900926

E: Proteintech-CN@ptglab.com

W: ptgcn.com

This product is exclusively available under Proteintech Group brand and is not available to purchase from any other manufacturer.

Selected Validation Data



Immunofluorescent analysis of (4% PFA) fixed human tonsillitis tissue using CoraLite® Plus 647 human IgD antibody (CL647-67538, Clone: 1D1B12) at dilution of 1:400.