

For Research Use Only

CoraLite® Plus 647-conjugated human IgM Monoclonal antibody

Catalog Number: CL647-66484



Basic Information

Catalog Number:

CL647-66484

Size:

1000 ug/ml

Source:

Mouse

Isotype:

IgG1

Immunogen Catalog Number:

AG1459

GenBank Accession Number:

BC009851

GeneID (NCBI):

3507

Full Name:

immunoglobulin heavy constant mu

Calculated MW:

69 kDa

Purification Method:

Protein G purification

CloneNo.:

2D10B10

Recommended Dilutions:

IF-P 1:50-1:500

Excitation/Emission maxima wavelengths:

654 nm / 674 nm

Applications

Tested Applications:

IF-P

Species Specificity:

human

Positive Controls:

IF-P : human appendicitis tissue, human tonsillitis tissue

Background Information

IGHM is the constant region of heavy chain of IgM. IgM is the first immunoglobulin expressed during B cell development. IgM antibodies play an important role in primary immune response involved in early recognition of external invaders like bacteria and viruses, cellular waste and modified self, as well as in recognition and elimination of precancerous and cancerous lesions. The μ heavy chain disease is a rare lymphoproliferative disorder. Human immunoglobulin heavy chain locus translocations are associated with leukaemias and lymphomas, including multiple myeloma, mantle cell lymphoma, Burkitt's lymphoma and diffuse large B cell lymphoma. This antibody detects the heavy chain of human IgM (~75 kDa).

Storage

Storage:

Store at -20°C. Avoid exposure to light. Stable for one year after shipment.

Storage Buffer:

PBS with 50% Glycerol, 0.05% Proclin300, 0.5% BSA, pH 7.3.

Aliquoting is unnecessary for -20°C storage

For technical support and original validation data for this product please contact:

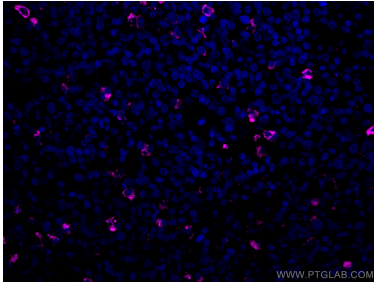
T: 4006900926

E: Proteintech-CN@ptglab.com

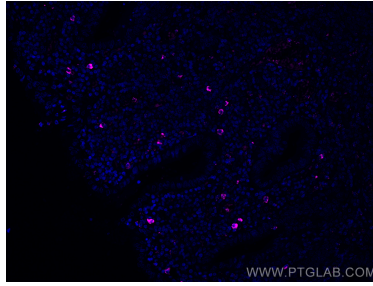
W: ptgcn.com

This product is exclusively available under Proteintech Group brand and is not available to purchase from any other manufacturer.

Selected Validation Data



Immunofluorescent analysis of (4% PFA) fixed human tonsillitis tissue using CoraLite® Plus 647 human IgM antibody (CL647-66484, Clone: 2D10B10) at dilution of 1:100.



Immunofluorescent analysis of (4% PFA) fixed human appendicitis tissue using CoraLite® Plus 647 human IgM antibody (CL647-66484, Clone: 2D10B10) at dilution of 1:200.