

For Research Use Only



CoraLite® Plus 647-conjugated Heavy chain of Rabbit IgG Monoclonal antibody

Catalog Number: **CL647-66467**

Basic Information

| | | |
|--------------------------------|---|--|
| Catalog Number: CL647-66467 | GenBank Accession Number: GeneID (NCBI): UNIPROT ID: N/A | Purification Method: Protein G purification CloneNo.: 1C9A5 |
| Size: 1000 µg/ml | Full Name: | Recommended Dilutions: IF/ICC 1:200-1:800 |
| Source: Mouse | | Excitation/Emission maxima wavelengths: 654 nm / 674 nm |
| Isotype: IgG1 | | |

Applications

| | |
|--|--|
| Tested Applications: IF/ICC, FC (Intra) | Positive Controls: IF/ICC : HeLa cells, |
| Species Specificity: rabbit | |

Background Information

This antibody specifically recognizes the heavy chain of Rabbit IgG.

Storage

Storage:
Store at -20°C. Avoid exposure to light. Stable for one year after shipment.
Storage Buffer:
PBS with 50% Glycerol, 0.05% Proclin300, 0.5% BSA, pH 7.3.
Aliquoting is unnecessary for -20°C storage

For technical support and original validation data for this product please contact:

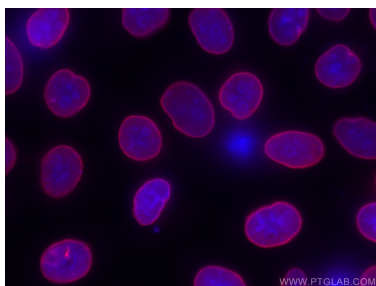
T: 4006900926

E: Proteintech-CN@ptglab.com

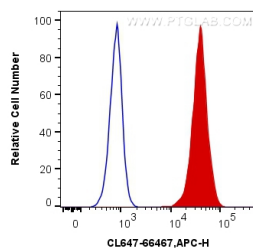
W: ptgcn.com

This product is exclusively available under Proteintech Group brand and is not available to purchase from any other manufacturer.

Selected Validation Data



Immunofluorescent analysis of (-20°C Ethanol) fixed HeLa cells using the CoraLite® Plus 647-conjugated version of this antibody, CL647-66467 (Heavy chain of Rabbit IgG antibody), at dilution of 1:200.



1X10⁶ HeLa cells were intracellularly stained with Beta Catenin Polyclonal antibody (51067-2-AP) and 0.4 ug CoraLite® Plus 647 Anti-Rabbit Heavy chain of Rabbit IgG (CL647-66467, Clone:1C9A5) (red), or Control Antibody and 0.4 ug CoraLite® Plus 647 Anti-Rabbit Heavy chain of Rabbit IgG (CL647-66467, Clone:1C9A5). Cells were fixed with 4% PFA and permeabilized with Flow Cytometry Perm Buffer (PF00011-C).