

For Research Use Only

# CoraLite® Plus 647 Mouse IgG1 Isotype Control (1F8D3)



Catalog Number:CL647-66360-1

## Basic Information

Catalog Number:

CL647-66360-1

GenBank Accession Number:

GeneID (NCBI):

Purification Method:

Protein G purification

Size:

100ug, 200 µg/ml

Full Name:

CloneNo.:

1F8D3

Source:

Mouse

Excitation/Emission maxima  
wavelengths:

654 nm / 674 nm

Isotype:

IgG1

## Applications

Tested Applications:

FC

Species Specificity:

Megathura crenulata

## Background Information

This antibody is used as the isotype control of mouse IgG1 (Kappa). It can be used as the isotype control in Flow Cytometry, Immuno-Precipitation and other experiments. The immunogen of this antibody is Keyhole Limpet Hemocyanin (KLH).

## Storage

Storage:

Store at 2-8°C. Avoid exposure to light. Stable for one year after shipment.

Storage Buffer:

PBS with 0.09% sodium azide and 0.5% BSA.

For technical support and original validation data for this product please contact:

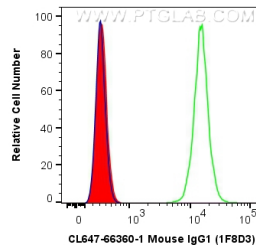
T: 4006900926

E: [Proteintech-CN@ptglab.com](mailto:Proteintech-CN@ptglab.com)

W: [ptgcn.com](http://ptgcn.com)

This product is exclusively available under Proteintech Group brand and is not available to purchase from any other manufacturer.

## Selected Validation Data



1X10<sup>6</sup> HepG2 cells were intracellularly stained with 0.2 ug CoraLite® Plus 647 Anti-Mouse IgG1 isotype control (CL647-66360-1, Clone:1F8D3) (red), or 0.2 ug CoraLite® Plus 647 Lamin B1 antibody (CL647-66095, Clone: 3C10G12) (green), or unstained (blue). Cells were fixed and permeabilized with Transcription Factor Staining Buffer Kit (PF00011).