

For Research Use Only

CoraLite® Plus 647-conjugated Lamin B1 Monoclonal antibody

Catalog Number: CL647-66095

Featured Product

1 Publications



Basic Information

Catalog Number:

CL647-66095

Size:

1000 ug/ml

Source:

Mouse

Isotype:

IgG1

Immunogen Catalog Number:

AG20522

GenBank Accession Number:

BC012295

GeneID (NCBI):

4001

ENSEMBL Gene ID:

ENSG00000113368

UNIPROT ID:

P20700

Full Name:

lamin B1

Calculated MW:

66 kDa

Observed MW:

66-70 kDa

Purification Method:

Protein G purification

CloneNo.:

3C10G12

Recommended Dilutions:

IF/ICC 1:50-1:500

Excitation/Emission maxima wavelengths:

654 nm / 674 nm

Applications

Tested Applications:

IF/ICC, FC (Intra)

Cited Applications:

IF

Species Specificity:

human, mouse, rat

Cited Species:

human

Positive Controls:

IF/ICC : HepG2 cells,

Background Information

Lamins are components of the nuclear lamina, a fibrous layer on the nucleoplasmic side of the inner nuclear membrane, which is thought to provide a framework for the nuclear envelope and may also interact with chromatin. The nuclear lamina consists of a two-dimensional matrix of proteins located next to the inner nuclear membrane. The lamin family of proteins make up the matrix and are highly conserved in evolution. During mitosis, the lamina matrix is reversibly disassembled as the lamin proteins are phosphorylated. Vertebrate lamins consist of two types, A and B. This gene encodes one of the two B type proteins, B1. This protein is not suitable for samples where the nuclear envelope has been removed.

Notable Publications

Author	Pubmed ID	Journal	Application
Banafsheh Golchoubian	34874453	J Cell Biol	IF

Storage

Storage:

Store at -20°C. Avoid exposure to light. Stable for one year after shipment.

Storage Buffer:

PBS with 50% Glycerol, 0.05% Proclin300, 0.5% BSA, pH 7.3.

Aliquoting is unnecessary for -20°C storage

For technical support and original validation data for this product please contact:

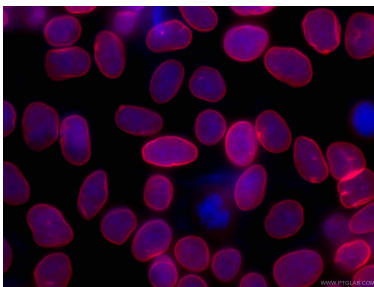
T: 4006900926

E: Proteintech-CN@ptglab.com

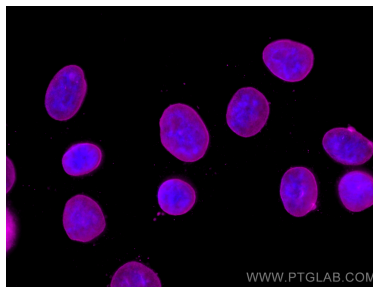
W: ptgcn.com

This product is exclusively available under Proteintech Group brand and is not available to purchase from any other manufacturer.

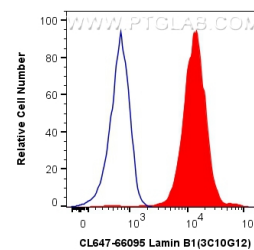
Selected Validation Data



Immunofluorescent analysis of (-20°C Ethanol) fixed HepG2 cells using CL647-66095 (Lamin B1 antibody) at dilution of 1:100.



Immunofluorescent analysis of (-20°C Methanol) fixed HepG2 cells using CoraLite® Plus 647 Lamin B1 antibody (CL647-66095, Clone: 3C10G12) at dilution of 1:200.



1X10⁶ HeLa cells were intracellularly stained with 0.4 ug CoraLite® Plus 647 Anti-Human Lamin B1 (CL647-66095, Clone:3C10G12) (red), or 0.4 ug CoraLite® Plus 647 Mouse IgG1 Isotype Control (MOPC-21) (CL647-65124, Clone: MOPC-21) (blue). Cells were fixed and permeabilized with Transcription Factor Staining Buffer Kit (PF00011).