

CoraLite® Plus 647-conjugated Bcl-XL Monoclonal antibody

Catalog Number: CL647-66020

Basic Information

Catalog Number:

CL647-66020

Size:

1000 µg/ml

Source:

Mouse

Isotype:

IgG2b

Immunogen Catalog Number:

AG18037

GenBank Accession Number:

BC019307

GeneID (NCBI):

598

UNIPROT ID:

Q07817

Full Name:

BCL2-like 1

Calculated MW:

26 kDa

Observed MW:

30 kDa

Purification Method:

Protein A purification

CloneNo.:

4C12A6

Excitation/Emission maxima wavelengths:

654 nm / 674 nm

Applications

Tested Applications:

FC (Intra)

Species Specificity:

human, mouse, rat

Background Information

BCL2L1 is a member of the BCL-2 protein family. BCL2L1 is expressed as three isoforms, Bcl-X(L), Bcl-X(s) and Bcl-X(beta), and is located at the outer mitochondrial membrane. The Bcl-XL isoform is a 233 amino acid protein, acting as an apoptotic inhibitor. Bcl-XL can form heterodimers with BAX, BAK or BCL2, and the heterodimerization with BAX does not seem to be required for anti-apoptotic activity. The Bcl-XS isoform is a shorter variant that is 178 amino acids in length and lacks a 63 amino acid region (amino acids 126-188), acting as an apoptotic activator.

Storage

Storage:

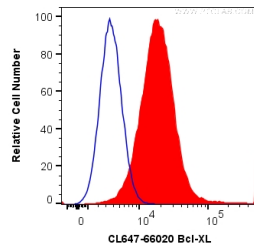
Store at -20°C. Avoid exposure to light. Stable for one year after shipment.

Storage Buffer:

PBS with 50% Glycerol, 0.05% Proclin300, 0.5% BSA, pH 7.3.

Aliquoting is unnecessary for -20°C storage

Selected Validation Data



1×10^6 HeLa cells were intracellularly stained with 0.2 μ g CoraLite® Plus 647 Anti-Human Bcl-XL (CL647-66020, Clone:4C12A6) (red), or 0.2 μ g Control Antibody. Cells were fixed with 4% PFA and permeabilized with Flow Cytometry Perm Buffer (PF00011-C).