

For Research Use Only

CoraLite® Plus 647 Anti-Mouse CD11b (M1/70) Rat IgG2a Recombinant Antibody

Catalog Number: CL647-65672



Basic Information

Catalog Number:

CL647-65672

Concentration:

100ug, 500 ug/ml

Source:

Rat

Isotype:

IgG2a

GenBank Accession Number:

BC156991

GeneID (NCBI):

16409

UNIPROT ID:

E9Q604

Full Name:

integrin alpha M

Calculated MW:

127 kDa

Purification Method:

Protein A purification

CloneNo.:

M1/70

Recommended Dilutions:

FC: 0.25 ug per 10⁶ cells in a 100 µl suspension

Excitation/Emission maxima wavelengths:

654 nm / 674 nm

Applications

Tested Applications:

FC

Species Specificity:

human, mouse, rabbit, monkey, guinea pig, non-human primates

Positive Controls:

FC : mouse bone marrow cells,

Background Information

Integrins are cell adhesion receptors that are heterodimers composed of non-covalently associated α and β subunits (PMID: 9779984). CD11b, also known as Integrin alpha M or CR3A, belongs to the integrin alpha chain family. CD11b forms an α / β heterodimer with CD18 (integrin β 2). CD11b/CD18 is implicated in various adhesive interactions of monocytes, macrophages and granulocytes as well as in mediating the uptake of complement-coated particles and pathogens (PMID: 9558116; 20008295). CD11b/CD18 is a receptor for the complement protein fragment iC3b, and is also a receptor for fibrinogen, factor X and ICAM1 (PMID: 2971974; 15485828).

Storage

Storage:

Store at 2-8°C. Avoid exposure to light. Stable for one year after shipment.

Storage Buffer:

PBS with 0.09% sodium azide, pH7.3

For technical support and original validation data for this product please contact:

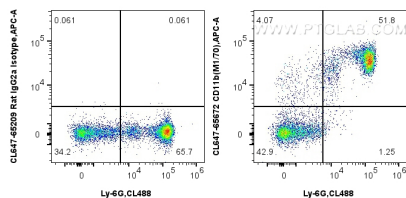
T: 4006900926

E: Proteintech-CN@ptglab.com

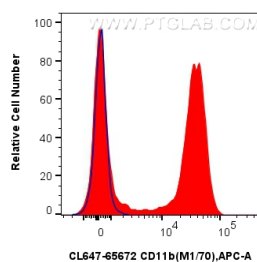
W: ptgcn.com

This product is exclusively available under Proteintech Group brand and is not available to purchase from any other manufacturer.

Selected Validation Data



1x10⁶ mouse bone marrow cells were surface stained with CoraLite® Plus 488 Anti-Mouse Ly-6G, and 0.25 ug CoraLite® Plus 647 Anti-Mouse CD11b (M1/70) Rat IgG2a RecAb (CL647-65672, Clone :M1/70) or CoraLite® Plus 647 Rat IgG2a Isotype Control (2A3) (CL647-65209, Clone: 2A3). Cells were not fixed.



1x10⁶ mouse bone marrow cells were surface stained with 0.25 ug CoraLite® Plus 647 Anti-Mouse CD11b (M1/70) Rat IgG2a RecAb (CL647-65672, Clone: M1/70) (red) or CoraLite® Plus 647 Rat IgG2a Isotype Control (2A3) (CL647-65209, Clone: 2A3) (blue). Cells were not fixed.