

For Research Use Only

CoraLite® Plus 647 Anti-Human CD314/NKG2D (1D11) Mouse IgG2a Recombinant Antibody

Catalog Number: **CL647-65643**



Basic Information

Catalog Number:

CL647-65643

Size:

100 tests, 5 µl/test

Source:

Mouse

Isotype:

IgG2a

GenBank Accession Number:

BC039836

GeneID (NCBI):

22914

Full Name:

killer cell lectin-like receptor

subfamily K, member 1

Calculated MW:

25 kDa

Purification Method:

Protein A purification

CloneNo.:

1D11

Excitation/Emission maxima

wavelengths:

654 nm / 674 nm

Applications

Tested Applications:

FC

Species Specificity:

human

Background Information

CD314, also known as NKG2D or Killer cell lectin-like receptor subfamily K member 1 (KLRL1), is a type II lectin-like transmembrane stimulatory receptor (PMID: 8436421). In humans, it is expressed on NK cells, gamma delta T cells, and CD8+ alpha beta T cells (PMID: 10426993). Various families of cell surface ligands have been identified, including the MICA/MICB and ULBP proteins (PMID: 12150888). CD314 is involved in both innate and adaptive immunities, and the NKG2D/NKG2DL pathway involves multiple effector cell types for controlling tumor progression (PMID: 31720075).

Storage

Storage:

Store at 2-8°C. Avoid exposure to light. Stable for one year after shipment.

Storage Buffer:

PBS with 0.09% sodium azide and 0.5% BSA.

For technical support and original validation data for this product please contact:

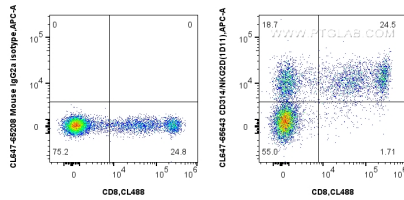
T: 4006900926

E: Proteintech-CN@ptglab.com

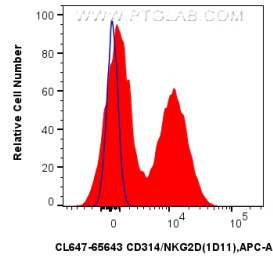
W: ptgcn.com

This product is exclusively available under Proteintech Group brand and is not available to purchase from any other manufacturer.

Selected Validation Data



1x10⁶ human PBMCs were surface stained with CoraLite® Plus 488 Anti-Human CD8 and 5 ul CoraLite®647 Anti-Human CD314/NKG2D (1D11) Mouse IgG2a RecAb (CL647-65643, Clone: 1D11), or CoraLite®647 Mouse IgG2a Isotype Control (C1.18.4) (CL647-65208, Clone: C1.18.4). Cells were not fixed. Lymphocytes were gated.



1x10⁶ human PBMCs were surface stained with 5 ul CoraLite®647 Anti-Human CD314/NKG2D (1D11) Mouse IgG2a RecAb (CL647-65643, Clone:1D11)(red), or CoraLite®647 Mouse IgG2a Isotype Control (C1.18.4) (CL647-65208, Clone: C1.18.4) (blue). Cells were not fixed. Lymphocytes were gated.