

For Research Use Only

CoraLite® Plus 647 Anti-Human STRO-1 (STRO-1) Mouse IgG2a Recombinant Antibody

Catalog Number: **CL647-65585**



Basic Information

Catalog Number:

CL647-65585

Concentration:

100tests, 5 ul/test

Source:

Mouse

Isotype:

IgG2a

GenBank Accession Number:

GeneID (NCBI):

Full Name:

Purification Method:

Protein A purification

CloneNo.:

STRO-1

Recommended Dilutions:

FC: 5 ul per 10⁶ cells in a 100 µl suspension

Excitation/Emission maxima wavelengths:

654 nm / 674 nm

Applications

Tested Applications:

FC

Species Specificity:

human

Positive Controls:

FC : Human bone marrow mesenchymal stromal cells,

Background Information

Storage

Storage:

Store at 2-8°C. Avoid exposure to light. Stable for one year after shipment.

Storage Buffer:

PBS with 0.09% sodium azide and 0.5% BSA, pH7.3

For technical support and original validation data for this product please contact:

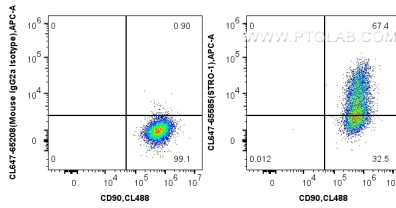
T: 4006900926

E: Proteintech-CN@ptglab.com

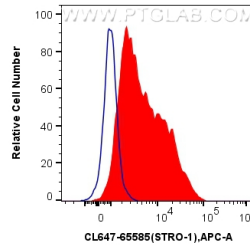
W: ptgcn.com

This product is exclusively available under Proteintech Group brand and is not available to purchase from any other manufacturer.

Selected Validation Data



1x10⁶ human bone marrow mesenchymal stromal cells were surface stained with CoraLite® Plus 488 Anti-Human CD90, and 5 ul CoraLite® Plus 647 Anti-Human STRO-1 (STRO-1) Mouse IgG2a RecAb (CL647-65585, Clone: STRO-1) or CoraLite® Plus 647 Mouse IgG2a Isotype Control (C1.18.4) (CL647-65208, Clone: C1.18.4). Cells were not fixed.



1x10⁶ human bone marrow mesenchymal stromal cells were surface stained with 5 ul CoraLite® Plus 647 Anti-Human STRO-1 (STRO-1) Mouse IgG2a RecAb (CL647-65585, Clone: STRO-1) (red) or CoraLite® Plus 647 Mouse IgG2a Isotype Control (C1.18.4) (CL647-65208, Clone: C1.18.4) (blue). Cells were not fixed.