

For Research Use Only



CoraLite® Plus 647 Anti-Human CD20 (2H7) Mouse IgG2a Recombinant Antibody

Catalog Number: **CL647-65575**

Basic Information

Catalog Number: CL647-65575	GenBank Accession Number: BC002807	Purification Method: Protein A purification
Size: 100tests, 5 µl/test	GeneID (NCBI): 931	CloneNo.: 2H7
Source: Mouse	Full Name: membrane-spanning 4-domains, subfamily A, member 1	Excitation/Emission maxima wavelengths: 654 nm / 674 nm
Isotype: IgG2a	Calculated MW: 297 aa, 33 kDa	

Applications

Tested Applications:
FC

Species Specificity:
human

Background Information

CD20 is a 33-37 kDa transmembrane phosphoprotein belonging to the membrane-spanning 4A family (PMID: 3260267; 16785532). CD20 is a B-lymphocyte surface molecule that is widely expressed during B-cell ontogeny, from early pre-B-cell developmental stages until final differentiation into plasma cells (PMID: 7524522). CD20 functions as calcium-permeable cation channel (PMID: 7684739). It is involved in the regulation of B-cell activation, proliferation and differentiation (PMID: 7524522).

Storage

Storage:
Store at 2-8°C. Avoid exposure to light.
Storage Buffer:
PBS with 0.09% sodium azide and 0.5% BSA.

For technical support and original validation data for this product please contact:

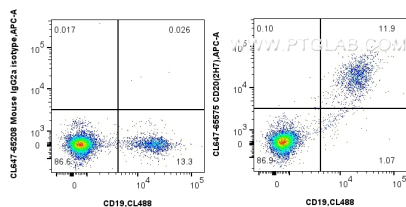
T: 4006900926

E: Proteintech-CN@ptglab.com

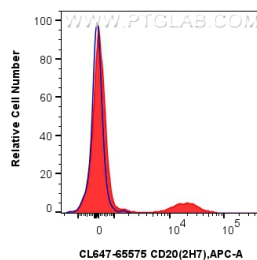
W: ptgcn.com

This product is exclusively available under Proteintech Group brand and is not available to purchase from any other manufacturer.

Selected Validation Data



1x10⁶ human PBMCs were surface stained with CoraLite® Plus 488 Anti-Human CD19 and 5 ul CoraLite® Plus 647 Anti-Human CD20 Mouse IgG2a Recombinant Antibody (CL647-65575, Clone: 2H7), or CoraLite® Plus 647 Mouse IgG2a Isotype Control (CL647-65208, Clone: C1.18.4). Cells were not fixed. Lymphocytes were gated.



1x10⁶ human PBMCs were surface stained with 5 ul CoraLite® Plus 647 Anti-Human CD20 Mouse IgG2a Recombinant Antibody (CL647-65575, Clone: 2H7) (red), or CoraLite® Plus 647 Mouse IgG2a Isotype Control (CL647-65208, Clone: C1.18.4) (blue). Cells were not fixed. Lymphocytes were gated.