

For Research Use Only



# CoraLite® Plus 647 Anti-Human CD11c (3.9) Mouse IgG2a Recombinant Antibody

Catalog Number: **CL647-65568**

## Basic Information

Catalog Number: CL647-65568	GenBank Accession Number: BC038237	Purification Method: Protein A purification
Size: 100tests, 5 µl/test	GeneID (NCBI): 3687	CloneNo.: 3.9
Source: Mouse	ENSEMBL Gene ID: ENSG00000140678	Excitation/Emission maxima wavelengths: 654 nm / 674 nm
Isotype: IgG2a	Full Name: integrin, alpha X (complement component 3 receptor 4 subunit)	
	Calculated MW: 1169 aa, 129 kDa	

## Applications

Tested Applications:  
FC  
  
Species Specificity:  
Human

## Background Information

Integrins are cell adhesion receptors that are heterodimers composed of non-covalently associated  $\alpha$  and  $\beta$  subunits (PMID: 9779984). CD11c, also known as integrin  $\alpha$  X, is a type I transmembrane glycoprotein present on a variety of cells, including monocytes/macrophages, granulocytes, a subset of B cells, NK cells and dendritic cells (PMID: 2897326; 1680915; 1694698; 17389580). As a result of its high level of expression on most dendritic cells, CD11c is typically considered to be a marker of conventional dendritic cells (PMID: 27119555). CD11c forms an  $\alpha$  /  $\beta$  heterodimer with CD18 (integrin  $\beta$  2). CD11c/CD18 acts a receptor for fibrinogen and is important in monocyte adhesion and chemotaxis (PMID: 1671533).

## Storage

Storage:  
Store at 2-8°C. Avoid exposure to light. Stable for one year after shipment.  
Storage Buffer:  
PBS with 0.09% sodium azide and 0.5% BSA.

For technical support and original validation data for this product please contact:

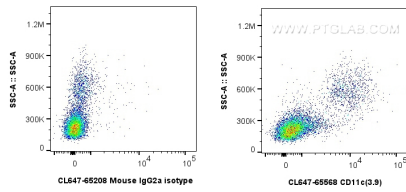
T: 4006900926

E: [Proteintech-CN@ptglab.com](mailto:Proteintech-CN@ptglab.com)

W: [ptgcn.com](http://ptgcn.com)

This product is exclusively available under Proteintech Group brand and is not available to purchase from any other manufacturer.

## Selected Validation Data



1x10<sup>6</sup> human PBMCs were surface stained with 5 ul Coralite® Plus 647 Cd11c Recombinant Antibody (CL647-65568, Clone:3.9), or Coralite® Plus 647 Mouse IgG2a Isotype Control (C1.18.4) (CL647-65208, Clone: C1.18.4). Cells were not fixed.