

For Research Use Only

# CoraLite® Plus 647 Anti-Rat CD43 (W3/13) Rabbit IgG Recombinant Antibody

Catalog Number: **CL647-65556**



## Basic Information

Catalog Number:

**CL647-65556**

Concentration:

**100ug, 500 ug/ml**

Source:

**Rabbit**

Isotype:

**IgG**

GenBank Accession Number:

GeneID (NCBI):

**24796**

UNIPROT ID:

**P13838**

Full Name:

**sialophorin**

Calculated MW:

**38 kDa**

Purification Method:

**Affinity purification**

CloneNo.:

**W3/13**

Recommended Dilutions:

**FC: 0.5 ug per 10<sup>6</sup> cells in 100 µl suspension**

Excitation/Emission maxima wavelengths:

**654 nm / 674 nm**

## Applications

Tested Applications:

**FC**

Species Specificity:

**rat**

Positive Controls:

**FC : rat splenocytes,**

## Background Information

### Storage

Storage:

**Store at 2-8°C. Avoid exposure to light. Stable for one year after shipment.**

Storage Buffer:

**PBS with 0.09% sodium azide, pH7.3**

For technical support and original validation data for this product please contact:

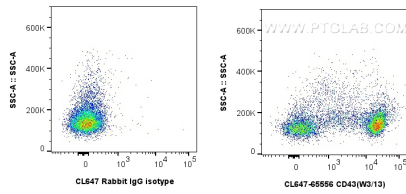
T: 4006900926

E: [Proteintech-CN@ptglab.com](mailto:Proteintech-CN@ptglab.com)

W: [ptgcn.com](http://ptgcn.com)

**This product is exclusively available under Proteintech Group brand and is not available to purchase from any other manufacturer.**

## Selected Validation Data



1x10<sup>6</sup> rat splenocytes were surface stained with 0.5 ug CoraLite® Plus 647 Anti-Rat CD43 (W3/13) Rabbit Recombinant Antibody (CL647-65556, Clone:W3/13), or CoraLite® Plus 647-conjugated Rabbit IgG control Rabbit PolyAb (CL647-30000). Cells were not fixed.