

# CoraLite® Plus 647 Anti-Human CD3 (UCHT1) Rabbit Recombinant Antibody

Catalog Number: **CL647-65554**

## Basic Information

|                                |   |   |
|--------------------------------|---|---|
| Catalog Number:<br>CL647-65554 | GenBank Accession Number:<br>BC049847   | Purification Method:<br>Affinity purification                 |
| Size:<br>100tests, 5 µl/test   | GeneID (NCBI):<br>916   | CloneNo.:<br>UCHT1  |
| Source:<br>Rabbit              | ENSEMBL Gene ID:<br>ENSG00000198851   | Excitation/Emission maxima<br>wavelengths:<br>654 nm / 674 nm |
| Isotype:<br>IgG                | Full Name:<br>CD3e molecule, epsilon (CD3-TCR<br>complex)<br>Calculated MW:<br>207 aa, 23 kDa |   |

## Applications

Tested Applications:  
FC  
Species Specificity:  
Human

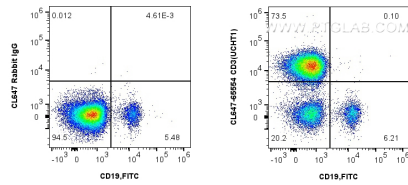
## Background Information

CD3 is a multimeric protein associated with the T-cell receptor (TCR) to form a complex involved in antigen recognition and signal transduction (PMID: 15885124). CD3 is composed of CD3  $\gamma$ ,  $\delta$ ,  $\epsilon$ , and  $\zeta$  chains (PMID: 1826255). It is expressed by thymocytes in a developmentally regulated manner, T cells, and some NK cells (PMID: 3289580). The TCR recognizes antigens bound to major histocompatibility complex (MHC) molecules. TCR-mediated peptide-MHC recognition is transmitted to the CD3 complex, leading to the intracellular signal transduction (PMID: 11985657).

## Storage

Storage:  
Store at 2-8°C. Avoid exposure to light. Stable for one year after shipment.  
Storage Buffer:  
PBS with 0.09% sodium azide and 0.5% BSA.

## Selected Validation Data



1x10<sup>6</sup> human PBMCs were surface stained with 5 ul CoraLite® Plus 647 Anti-Human CD3 Rabbit Recombinant Antibody (CL647-65554, Clone: UCHT1) or CoraLite® Plus 647-conjugated Rabbit IgG control (CL647-30000), and 5 ul FITC Plus Anti-Human CD19 (HIB19) (FITC-65110, Clone: HIB19). Cells were not fixed. Lymphocytes were gated.