

CoraLite® Plus 647 Anti-Human CD3 (UCHT1) Mouse IgG1 Recombinant Antibody

Catalog Number: **CL647-65536**

Basic Information

Catalog Number: CL647-65536	GenBank Accession Number: BC049847	Purification Method: Affinity purification
Size: 100tests, 5 µl/test	GeneID (NCBI): 916	CloneNo.: UCHT1
Source: Mouse	ENSEMBL Gene ID: ENSG00000198851	Excitation/Emission maxima wavelengths: 654 nm / 674 nm
Isotype: IgG1	Full Name: CD3e molecule, epsilon (CD3-TCR complex) Calculated MW: 207 aa, 23 kDa	

Applications

Tested Applications:
FC
Species Specificity:
Human

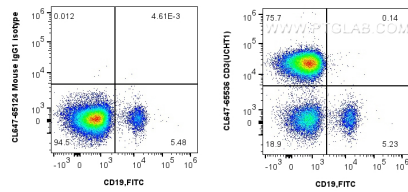
Background Information

CD3 is a multimeric protein associated with the T-cell receptor (TCR) to form a complex involved in antigen recognition and signal transduction (PMID: 15885124). CD3 is composed of CD3 γ , δ , ϵ , and ζ chains (PMID: 1826255). It is expressed by thymocytes in a developmentally regulated manner, T cells, and some NK cells (PMID: 3289580). The TCR recognizes antigens bound to major histocompatibility complex (MHC) molecules. TCR-mediated peptide-MHC recognition is transmitted to the CD3 complex, leading to the intracellular signal transduction (PMID: 11985657).

Storage

Storage:
Store at 2-8°C. Avoid exposure to light. Stable for one year after shipment.
Storage Buffer:
PBS with 0.09% sodium azide and 0.5% BSA.

Selected Validation Data



1x10⁶ human PBMCs were surface stained with 5 ul CoraLite® Plus 647 Anti-Human CD3 Mouse Recombinant Antibody (CL647-65536, Clone: UCHT1) or CoraLite® Plus 647 Mouse IgG1 Isotype Control (MOPC-21) (CL647-65124, Clone: MOPC-21), and 5 ul FITC Plus Anti-Human CD19 (HIB19) (FITC-65110, Clone: HIB19). Cells were not fixed. Lymphocytes were gated.