

# CoraLite® Plus 647 Anti-Human CD11a (TS2/4) Rabbit Recombinant Antibody

Catalog Number: **CL647-65518**

## Basic Information

Catalog Number: CL647-65518	GenBank Accession Number: BC008777	Purification Method: Affinity purification
Size: 100tests, 5 µl/test	GeneID (NCBI): 3683	CloneNo.: TS2/4
Source: Rabbit	ENSEMBL Gene ID: ENSG00000005844	Excitation/Emission maxima wavelengths: 654 nm / 674 nm
Isotype: IgG	UNIPROT ID: P20701	
	Full Name: integrin, alpha L (antigen CD11A (p180), lymphocyte function- associated antigen 1; alpha polypeptide)	
	Calculated MW: 129 kDa	

## Applications

Tested Applications:  
FC  
  
Species Specificity:  
Human

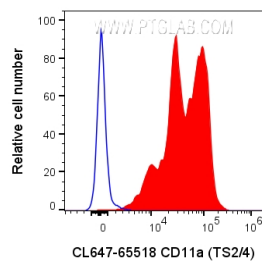
## Background Information

CD11a, also known as integrin  $\alpha$  L or LFA-1  $\alpha$ , is a 170-180 kDa transmembrane glycoprotein that forms a heterodimer with CD18 (PMID: 7027264; 1672643). CD11a/CD18 (LFA-1) is expressed by all leukocytes and mediates cell adhesion through interactions with its ligands, intercellular adhesion molecule 1 (ICAM-1), ICAM-2, and ICAM-3 (PMID: 7479767). CD11a/CD18 also functions in lymphocyte costimulatory signaling (PMID: 1972160).

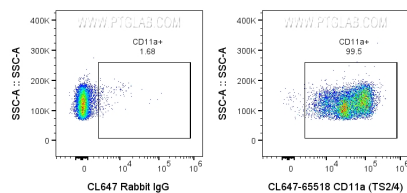
## Storage

Storage:  
Store at 2-8°C. Avoid exposure to light. Stable for one year after shipment.  
Storage Buffer:  
PBS with 0.09% sodium azide and 0.5% BSA.

## Selected Validation Data



1x10<sup>6</sup> human PBMCs were surface stained with 5 ul CoraLite® Plus 647 Anti-Human CD11a Rabbit Recombinant Antibody (CL647-65518, Clone:TS2/4) or CoraLite® Plus 647-conjugated Rabbit IgG control PolyAb (CL647-30000). Cells were not fixed. Lymphocytes were gated.



1x10<sup>6</sup> human PBMCs were surface stained with 5 ul CoraLite® Plus 647 Anti-Human CD11a Rabbit Recombinant Antibody (CL647-65518, Clone:TS2/4) or CoraLite® Plus 647-conjugated Rabbit IgG control PolyAb (CL647-30000). Cells were not fixed. Lymphocytes were gated.