

For Research Use Only



# CoraLite® Plus 647 Anti-Human CD21 (BU32) Mouse IgG1 Recombinant Antibody

Catalog Number: **CL647-65512**

## Basic Information

Catalog Number: CL647-65512	GenBank Accession Number: BC136394	Purification Method: Affinity purification
Size: 100tests, 5 µl/test	GeneID (NCBI): 1380	CloneNo.: BU32
Source: Mouse	ENSEMBL Gene ID: ENSG00000117322	Excitation/Emission maxima wavelengths: 654 nm / 674 nm
Isotype: IgG1	UNIPROT ID: P20023	
	Full Name: complement component (3d/Epstein Barr virus) receptor 2	
	Calculated MW: 1092 aa, 119 kDa	

## Applications

Tested Applications:  
FC  
  
Species Specificity:  
Human

## Background Information

CD21, also known as complement receptor type 2 (CR2), complement C3d receptor, and Epstein-Barr virus receptor, is a transmembrane protein that contains a small cytoplasmic domain, a transmembrane region and an extracellular domain consisting of 15 tandem short consensus repeat sequences (PMID: 6230668; 2551147). It is expressed on B cells, follicular dendritic cells, thymocytes and a subset of peripheral T cells (PMID: 26119182). CD21 binds complement fragments C3d, C3dg and iC3b and acts as a receptor for the Epstein-Barr virus (PMID: 7753047). On B cells, together with CD19 and CD81, CD21 forms a complex that functions as a co-receptor to the BCR (PMID: 7542009). It is involved in B cells activation and functions.

## Storage

Storage:  
Store at 2-8°C. Avoid exposure to light. Stable for one year after shipment.  
Storage Buffer:  
PBS with 0.09% sodium azide and 0.5% BSA.

For technical support and original validation data for this product please contact:

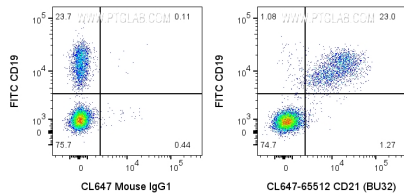
T: 4006900926

E: [Proteintech-CN@ptglab.com](mailto:Proteintech-CN@ptglab.com)

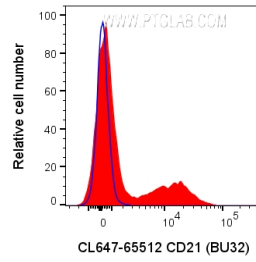
W: [ptgcn.com](http://ptgcn.com)

This product is exclusively available under Proteintech Group brand and is not available to purchase from any other manufacturer.

## Selected Validation Data



1x10<sup>6</sup> human PBMCs were surface stained with FITC Anti-Human CD19 and 5 ul CoraLite® Plus 647 Anti-Human CD21 Mouse Recombinant Antibody (CL647-65512, Clone: BU32) or CoraLite® Plus 647 Mouse IgG1 Isotype Control. Cells were not fixed. Lymphocytes were gated.



1x10<sup>6</sup> human PBMCs were surface stained with 5 ul CoraLite® Plus 647 Anti-Human CD21 Mouse Recombinant Antibody (CL647-65512, Clone: BU32) or CoraLite® Plus 647 Mouse IgG1 Isotype Control. Cells were not fixed. Lymphocytes were gated.