

# CoraLite® Plus 647 Anti-Human CD3 (OKT3) Rabbit Recombinant Antibody

Catalog Number: **CL647-65504**

## Basic Information

Catalog Number:

CL647-65504

Size:

100 tests, 5 µl/test

Source:

Rabbit

Isotype:

IgG

GenBank Accession Number:

BC049847

GeneID (NCBI):

916

ENSEMBL Gene ID:

ENSG00000198851

Full Name:

CD3e molecule, epsilon (CD3-TCR complex)

Calculated MW:

207 aa, 23 kDa

Purification Method:

Affinity purification

CloneNo.:

OKT3

Excitation/Emission maxima wavelengths:

654 nm / 674 nm

## Applications

Tested Applications:

FC

Species Specificity:

Human

## Background Information

CD3 is a multimeric protein associated with the T-cell receptor (TCR) to form a complex involved in antigen recognition and signal transduction (PMID: 15885124). CD3 is composed of CD3  $\gamma$ ,  $\delta$ ,  $\epsilon$ , and  $\zeta$  chains (PMID: 1826255). It is expressed by thymocytes in a developmentally regulated manner, T cells, and some NK cells (PMID: 3289580). The TCR recognizes antigens bound to major histocompatibility complex (MHC) molecules. TCR-mediated peptide-MHC recognition is transmitted to the CD3 complex, leading to the intracellular signal transduction (PMID: 11985657).

## Storage

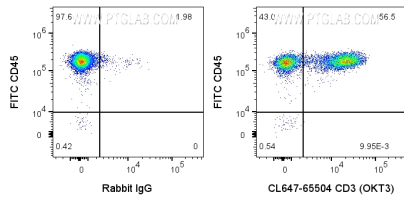
Storage:

Store at 2-8°C. Avoid exposure to light. Stable for one year after shipment.

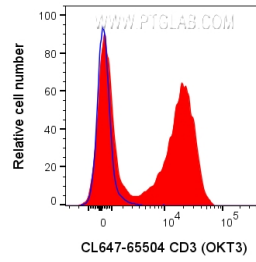
Storage Buffer:

PBS with 0.09% sodium azide and 0.5% BSA.

## Selected Validation Data



1x10<sup>6</sup> human PBMCs were surface stained with FITC Anti-Human CD45 and 5 ul CoraLite® Plus 647 Anti-Human CD3 Rabbit Recombinant Antibody (CL647-65504, Clone:OKT3) or CoraLite® Plus 647-conjugated Rabbit IgG control PolyAb (CL647-30000). Cells were not fixed. Lymphocytes were gated.



1x10<sup>6</sup> human PBMCs were surface stained with 5 ul CoraLite® Plus 647 Anti-Human CD3 Rabbit Recombinant Antibody (CL647-65504, Clone:OKT3) or CoraLite® Plus 647-conjugated Rabbit IgG control PolyAb (CL647-30000). Cells were not fixed. Lymphocytes were gated.