

For Research Use Only

# CoraLite® Plus 647 Anti-Rat CD45RA (OX-33)



Catalog Number: **CL647-65234**

## Basic Information

### Catalog Number:

CL647-65234

### Size:

100ug, 0.5 mg/ml

### Source:

Mouse

### Isotype:

IgG1, kappa

### GenBank Accession Number:

XM\_006249910

### GeneID (NCBI):

24699

### UNIPROT ID:

P04157

### Full Name:

protein tyrosine phosphatase, receptor type, C

### Calculated MW:

143 kDa

### Purification Method:

Affinity purification

### CloneNo.:

OX-33

### Excitation/Emission maxima wavelengths:

654 nm / 674 nm

## Applications

### Tested Applications:

FC

### Species Specificity:

rat

## Background Information

CD45, also known as protein tyrosine phosphatase, receptor type C, is a type I transmembrane protein expressed on the surface of all haematopoietic cells with the exception of erythrocytes and platelets (PMID: 3489673; 28615666). CD45 is a pan-haematopoietic cell marker and has been shown to be essential for T- and B-cell activation and signalling (PMID: 9429890; 16378097). CD45 exists as multiple isoforms due to alternative splicing of three exons (4, 5, and 6, designated A, B, and C) in the extracellular domain (PMID: 12414720). CD45RA is expressed on naïve T cells, B cells, and monocytes (PMID: 1830500; 14687231).

## Storage

### Storage:

Store at 2-8°C. Avoid exposure to light. Stable for one year after shipment.

### Storage Buffer:

PBS with 0.09% sodium azide.

For technical support and original validation data for this product please contact:

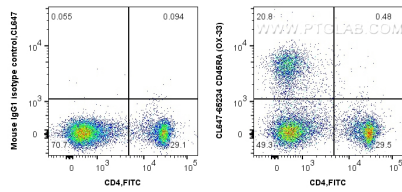
T: 4006900926

E: [Proteintech-CN@ptglab.com](mailto:Proteintech-CN@ptglab.com)

W: [ptgcn.com](http://ptgcn.com)

This product is exclusively available under Proteintech Group brand and is not available to purchase from any other manufacturer.

## Selected Validation Data



1X10<sup>6</sup> rat splenocytes cells were surface co-stained with FITC Anti-Rat CD4 (OX-35) and 0.5 ug CoraLite® Plus 647 Anti-Rat CD45RA (CL647-65234, Clone: OX-33) or 0.5 ug CoraLite® Plus 647 Mouse IgG1 Isotype Control (MOPC-21) (CL647-65124, Clone: MOPC-21). Cells were not fixed.