

For Research Use Only

# CoraLite® Plus 647 Anti-Mouse PLVAP (MECA-32)

Catalog Number: CL647-65214



## Basic Information

Catalog Number:

CL647-65214

Concentration:

100ug, 500 ug/ml

Source:

Rat

Isotype:

IgG2a, kappa

GenBank Accession Number:

BC013517

GeneID (NCBI):

84094

UNIPROT ID:

Q91VC4

Full Name:

plasmalemma vesicle associated protein

Purification Method:

Protein A purification

CloneNo.:

MECA-32

Excitation/Emission maxima wavelengths:

654 nm / 674 nm

## Applications

Tested Applications:

FC

Species Specificity:

mouse

## Background Information

Plasmalemma vesicle-associated protein (PLVAP), also known as PV-1, PAL-E and MECA-32 antigen, is an endothelial cell-specific type II membrane N-glycosylated glycoprotein with a molecular weight of approximately 50-65 kDa, that forms homodimers in situ (PMID: 7626790; 30231925). The MECA-32 antibody, derived from rats immunized with murine lymph node stroma, shows high specificity for mouse endothelium in both embryonic and mature tissues (PMID: 2683264; 7626790). It recognizes most endothelial cells in the embryonic and in the adult mouse, with the exception of the brain, skeletal, and cardiac muscle, where the MECA-32 antigen has a more restricted distribution. In skeletal and cardiac muscle only small arterioles and venules express the MECA-32 antigen, while in the brain its expression is negatively correlated with the differentiation of the vasculature to form the blood brain barrier (PMID: 7626790).

## Storage

Storage:

Store at 2-8°C. Avoid exposure to light. Stable for one year after shipment.

Storage Buffer:

PBS with 0.09% sodium azide and 0.5% BSA, pH7.3

For technical support and original validation data for this product please contact:

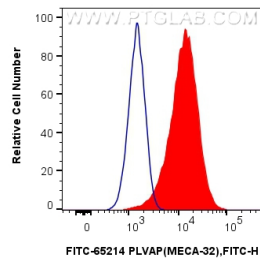
T: 4006900926

E: [Proteintech-CN@ptglab.com](mailto:Proteintech-CN@ptglab.com)

W: [ptgcn.com](http://ptgcn.com)

This product is exclusively available under Proteintech Group brand and is not available to purchase from any other manufacturer.

## Selected Validation Data



1x10<sup>6</sup> bEnd.3 cells were surface stained with 0.25 ug CoraLite® Plus 647 Anti-Mouse PLVAP (MECA-32) (CL647-65214, Clone:MECA-32) (red) or 0.25 ug CoraLite® Plus 647 Rat IgG2a Isotype Control (2A3) (CL647-65209, Clone: 2A3) (blue). Cells were not fixed.