

For Research Use Only

CoraLite® Plus 647 Rat IgG2b Isotype Control (LTF-2)

Catalog Number:CL647-65211



Basic Information

Catalog Number:

CL647-65211

Concentration:

100ug, 200 µg/ml

Source:

Rat

Isotype:

IgG2b, kappa

GenBank Accession Number:

GeneID (NCBI):

Full Name:

Purification Method:

Affinity purification

CloneNo.:

LTF-2

Recommended Dilutions:

FC: 0.2 ug per 10⁶ cells in 100 µl suspension

Excitation/Emission maxima wavelengths:

654 nm / 674 nm

Applications

Tested Applications:

FC

Species Specificity:

Positive Controls:

FC : mouse splenocytes,

Background Information

The LTF-2 immunoglobulin is useful as an isotype-matched control. The LTF-2 immunoglobulin has an unknown binding specificity and is used as an isotype control for rat IgG2b antibodies. This antibody has been quality-tested for flow cytometry as negative control.

Storage

Storage:

Store at 2-8°C. Avoid exposure to light. Stable for one year after shipment.

Storage Buffer:

PBS with 0.09% sodium azide and 0.5% BSA, pH7.3

For technical support and original validation data for this product please contact:

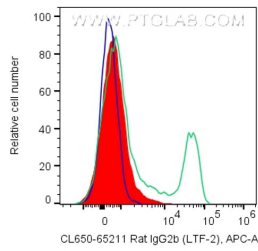
T: 4006900926

E: Proteintech-CN@ptglab.com

W: ptgcn.com

This product is exclusively available under Proteintech Group brand and is not available to purchase from any other manufacturer.

Selected Validation Data



1X10⁶ mouse splenocytes were surface stained with 0.2 μ g CoraLite® Plus 647 Rat IgG2b Isotype Control (CL647-65211, Clone:LTF-2) (red), CoraLite® Plus 647 Anti-Mouse CD4 (green), or unstained (blue). Cells were not fixed. CD8-negative lymphocytes were gated.