

For Research Use Only

# CoraLite® Plus 647 Anti-Mouse NK1.1 (CD161) (PK136)



Catalog Number: **CL647-65138**

## Basic Information

Catalog Number:

CL647-65138

Size:

100ug, 0.5 mg/ml

Source:

Mouse

Isotype:

IgG2a, kappa

GenBank Accession Number:

BC120707

GeneID (NCBI):

17057

UNIPROT ID:

P27811

Full Name:

killer cell lectin-like receptor  
subfamily B member 1A

Purification Method:

Affinity purification

CloneNo.:

PK136

Excitation/Emission maxima  
wavelengths:

654 nm / 674 nm

## Applications

Tested Applications:

FC

Species Specificity:

Mouse

## Background Information

NK1.1 (CD161), also known as KLRB1 or NKR-P1A, is a type II transmembrane C-type lectin-like receptor and is expressed on the cell membrane as disulfide-linked homodimer (PMID: 8077657). It is expressed by the majority of NK cells and subsets of peripheral T cells, including both CD4+ and CD8+ T cells, and is expressed preferentially on adult T cells with a "memory" antigenic phenotype (PMID: 8077657; 22566826). Expression of CD161 correlates with the cytotoxic function of CD16+ NK cells, and ligation of CD161 with its ligand LLT1 inhibits NK cell cytotoxicity and cytokine secretion (PMID: 29686665).

## Storage

Storage:

Store at 2-8°C. Avoid exposure to light. Stable for one year after shipment.

Storage Buffer:

PBS with 0.1% sodium azide and 0.5% BSA, pH 7.3.

For technical support and original validation data for this product please contact:

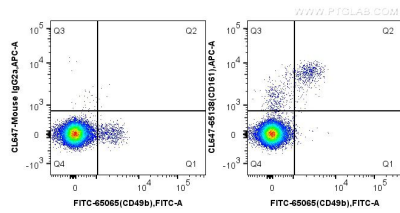
T: 4006900926

E: [Proteintech-CN@ptglab.com](mailto:Proteintech-CN@ptglab.com)

W: [ptgcn.com](http://ptgcn.com)

This product is exclusively available under Proteintech Group brand and is not available to purchase from any other manufacturer.

## Selected Validation Data



1X10<sup>6</sup> C57BL/6 mouse splenocytes were surface co-stained with FITC Anti-Mouse CD49b (DX5) and 0.25 ug CoraLite® Plus 647-conjugated Anti-Mouse NK1.1 (CD161) (CL647-65138, Clone: PK136) or 0.25 ug CoraLite® Plus 647-conjugated Mouse IgG2a isotype control. Cells were not fixed.