

For Research Use Only

# CoraLite® Plus 647 Anti-Mouse CD25 (PC61.5)



Catalog Number: **CL647-65137**

## Basic Information

<b>Catalog Number:</b> CL647-65137	<b>GenBank Accession Number:</b> BC114437	<b>Purification Method:</b> Affinity purification
<b>Size:</b> 100ug, 0.5 mg/ml	<b>GeneID (NCBI):</b> 16184	<b>CloneNo.:</b> PC61.5
<b>Source:</b> Rat	<b>UNIPROT ID:</b> P01590	<b>Excitation/Emission maxima wavelengths:</b> 654 nm / 674 nm
<b>Isotype:</b> IgG1, lambda	<b>Full Name:</b> interleukin 2 receptor, alpha chain	

## Applications

**Tested Applications:**  
FC

**Species Specificity:**  
Mouse

## Background Information

Proliferation of T lymphocytes is triggered by the interaction of IL-2 with its specific receptor following T lymphocyte activation. The receptor for IL-2 has three forms, generated by different combinations of three different proteins, the alpha chain (IL-2R alpha), the beta chain (IL-2R beta), and the gamma chain (IL-2R gamma) (PMID: 8476561). IL-2R alpha (also known as CD25) is a type I transmembrane protein present on activated T cells, activated B cells, some thymocytes, myeloid precursors, and oligodendrocytes. CD25 is also found on natural CD4<sup>+</sup>Foxp3<sup>+</sup> Treg cells (PMID: 22585674).

## Storage

**Storage:**  
Store at 2-8°C. Avoid exposure to light. Stable for one year after shipment.

**Storage Buffer:**  
PBS with 0.1% sodium azide and 0.5% BSA, pH 7.3.

For technical support and original validation data for this product please contact:

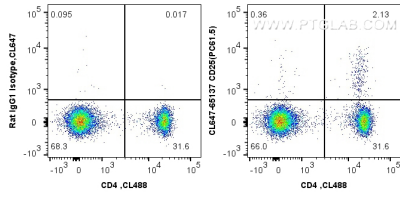
T: 4006900926

E: [Proteintech-CN@ptglab.com](mailto:Proteintech-CN@ptglab.com)

W: [ptgcn.com](http://ptgcn.com)

**This product is exclusively available under Proteintech Group brand and is not available to purchase from any other manufacturer.**

## Selected Validation Data



1X10<sup>6</sup> mouse splenocytes were surface stained with CoraLite® 488 Anti-Mouse CD4 (CL488-65104, Clone: GK1.5) and 0.5 µg CoraLite® Plus 647 Anti-Mouse CD25 (CL647-65137, Clone: PC61.5) or CoraLite® Plus 647-Conjugated rat IgG2a isotype control. Cells were not fixed.