

# CoraLite® Plus 647 Anti-Mouse CD62L (L-Selectin) (MEL-14)

Catalog Number: **CL647-65123**

## Basic Information

<b>Catalog Number:</b> CL647-65123	<b>GenBank Accession Number:</b> BC052681	<b>Purification Method:</b> Affinity purification
<b>Size:</b> 100tests, 5 µl/test	<b>GeneID (NCBI):</b> 20343	<b>CloneNo.:</b> MEL-14
<b>Source:</b> Rat	<b>UNIPROT ID:</b> P18337	<b>Recommended Dilutions:</b> IF/ICC 1:200-1:800
<b>Isotype:</b> IgG2a, kappa	<b>Full Name:</b> selectin, lymphocyte	<b>Excitation/Emission maxima wavelengths:</b> 654 nm / 674 nm

## Applications

<b>Tested Applications:</b> FC, IF/ICC	<b>Positive Controls:</b> IF/ICC : mouse splenocytes,
<b>Species Specificity:</b> Mouse	

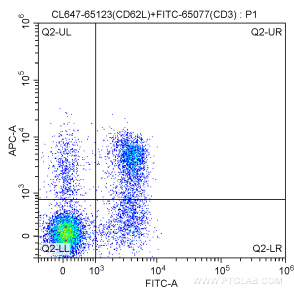
## Background Information

CD62L, also known as L-selectin or SELL, is a member of the selectin family of adhesion molecules that also include CD62E (E-selectin) and CD62P (P-selectin) (PMID: 2663882, 2473156, 1382078). CD62L is a highly glycosylated protein of 95-105 kDa on neutrophils and 74 kDa on lymphocytes (PMID: 1382078; 1694883, 1695155). CD62L is expressed on the surface of most leukocytes, including lymphocytes, neutrophils, monocytes, eosinophils, hematopoietic progenitor cells, and immature thymocytes (PMID: 1694883, 1688580). It mediates the binding of lymphocytes to high endothelial venules (HEV) of peripheral lymph nodes through interactions with a constitutively expressed ligand, and is also involved in lymphocyte, neutrophil, and monocyte attachment to endothelium at sites of inflammation (PMID: 1382078).

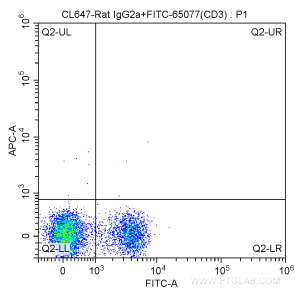
## Storage

**Storage:**  
Store at 2-8°C. Avoid exposure to light. Stable for one year after shipment.  
**Storage Buffer:**  
PBS with 0.1% sodium azide and 0.5% BSA, pH 7.3.

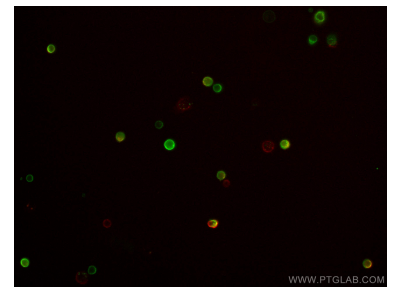
## Selected Validation Data



1X10<sup>6</sup> C57BL/6 mouse splenocytes were surface stained with FITC-Anti-Mouse CD3 (FITC-65077, Clone: 17A2) and 5.00 ul CoraLite® Plus 647-conjugated Anti-Mouse CD62L (L-Selectin) (CL647-65123, Clone: MEL-14). Cells were not fixed.



1X10<sup>6</sup> C57BL/6 mouse splenocytes were surface stained with FITC-Anti-Mouse CD3 (FITC-65077, Clone: 17A2) and CoraLite® Plus 647-conjugated Rat IgG2a isotype control antibody. Cells were not fixed.



Immunofluorescent analysis of mouse splenocytes using CoraLite® Plus 647-conjugated CD62L (L-Selectin) antibody (CL647-65123, Clone: MEL-14, red), and CoraLite® 488-conjugated CD3 antibody (CL488-65077, Clone: 17A2, green).