

For Research Use Only

CoraLite® Plus 647 Anti-Human CD20 (2H7)



Catalog Number: **CL647-65085**

Basic Information

Catalog Number:

CL647-65085

Size:

100 tests, 5 µl / test

Source:

Mouse

Isotype:

IgG2b, kappa

GenBank Accession Number:

BC002807

GeneID (NCBI):

931

Full Name:

membrane-spanning 4-domains, subfamily A, member 1

Calculated MW:

297 aa, 33 kDa

Purification Method:

Affinity purification

CloneNo.:

2H7

Excitation/Emission maxima wavelengths:

654 nm / 674 nm

Applications

Tested Applications:

FC

Species Specificity:

Human

Background Information

CD20 is a 33-37 kDa transmembrane phosphoprotein belonging to the membrane-spanning 4A family (PMID: 3260267; 16785532). CD20 is a B-lymphocyte surface molecule that is widely expressed during B-cell ontogeny, from early pre-B-cell developmental stages until final differentiation into plasma cells (PMID: 7524522). CD20 functions as calcium-permeable cation channel (PMID: 7684739). It is involved in the regulation of B-cell activation, proliferation and differentiation (PMID: 7524522).

Storage

Storage:

Store at 2-8°C. Avoid exposure to light. Stable for one year after shipment.

Storage Buffer:

PBS with 0.1% sodium azide and 0.5% BSA, pH 7.3.

For technical support and original validation data for this product please contact:

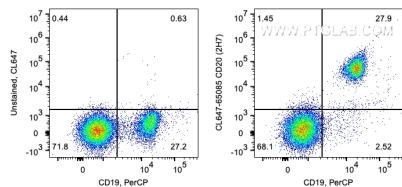
T: 4006900926

E: Proteintech-CN@ptglab.com

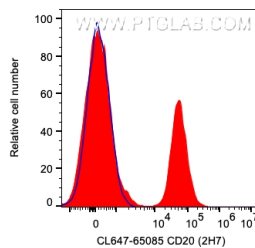
W: ptgcn.com

This product is exclusively available under Proteintech Group brand and is not available to purchase from any other manufacturer.

Selected Validation Data



1X10⁶ human PBMCs were surface co-stained with PerCP Anti-Human CD19 and 5 ul CoraLite® Plus 647 Anti-Human CD20 (CL647-65085, Clone: 2H7), or APC Mouse IgG2b Isotype Control. Cells were not fixed. Lymphocytes were gated.



1X10⁶ human PBMCs were surface stained with 5 ul CoraLite® Plus 647 Anti-Human CD20 (CL647-65085, Clone: 2H7), or APC Mouse IgG2b Isotype Control. Cells were not fixed. Lymphocytes were gated.