

For Research Use Only

CoraLite® Plus 647 Anti-Mouse CD45.2 (104)



Catalog Number: **CL647-65072**

Basic Information

| | | |
|---------------------------------------|---|---|
| Catalog Number: CL647-65072 | GenBank Accession Number: BC028512 | Purification Method: Affinity purification |
| Size: 100ug, 500 µg/ml | GeneID (NCBI): 19264 | CloneNo.: 104 |
| Source: Mouse | UNIPROT ID: P06800 | Excitation/Emission maxima wavelengths: 654 nm / 674 nm |
| Isotype: IgG2a, kappa | Full Name: protein tyrosine phosphatase, receptor type, C | |

Applications

Tested Applications:
FC

Species Specificity:
mouse

Background Information

CD45, also known as protein tyrosine phosphatase, receptor type C, is a type I transmembrane protein expressed on the surface of all haematopoietic cells with the exception of erythrocytes and platelets (PMID: 3489673; 28615666). CD45 is a pan-haematopoietic cell marker and has been shown to be essential for T- and B-cell activation and signalling (PMID: 9429890; 16378097). Allelic variants of mouse CD45, CD45.1 (Ly5.1) and CD45.2 (Ly5.1), have been established as a marker system to track haematopoietic cells following congenic mouse bone marrow transplants (PMID: 28615666). CD45.2 is the common form and is expressed by most of the established strains, while CD45.1 is found in only a few like the SJL mouse strain (PMID: 3489673).

Storage

Storage:
Store at 2-8°C. Avoid exposure to light. Stable for one year after shipment.
Storage Buffer:
PBS with 0.1% sodium azide and 0.5% BSA, pH 7.3.

For technical support and original validation data for this product please contact:

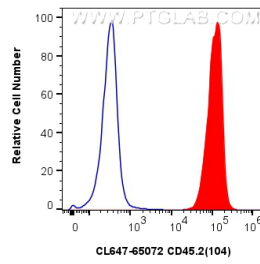
T: 4006900926

E: Proteintech-CN@ptglab.com

W: ptgcn.com

This product is exclusively available under Proteintech Group brand and is not available to purchase from any other manufacturer.

Selected Validation Data



1x10⁶ C57BL/6 mouse splenocytes were surface stained with 0.5 ug CoraLite® Plus 647 Anti-Mouse CD45.2 (CL647-65072, Clone:104) (red), or 0.5 ug CoraLite® Plus 647 Mouse IgG2a Isotype Control (C1.18.4) (CL647-65208, Clone: C1.18.4) (blue). Cells were not fixed.