

For Research Use Only

# CoraLite® Plus 647 Anti-Mouse CD3 $\epsilon$ (145-2C11)



Catalog Number: CL647-65060

## Basic Information

<b>Catalog Number:</b> CL647-65060	<b>GenBank Accession Number:</b> BC098236	<b>Purification Method:</b> Affinity purification
<b>Size:</b> 100ug, 500 $\mu$ g/ml	<b>GeneID (NCBI):</b> 12501	<b>CloneNo.:</b> 145-2C11
<b>Source:</b> Hamster	<b>UNIPROT ID:</b> P22646	<b>Excitation/Emission maxima wavelengths:</b> 654 nm / 674 nm
<b>Isotype:</b> IgG	<b>Full Name:</b> CD3 antigen, epsilon polypeptide	

## Applications

**Tested Applications:**  
FC

**Species Specificity:**  
mouse

## Background Information

CD3 is a multimeric protein associated with the T-cell receptor (TCR) to form a complex involved in antigen recognition and signal transduction (PMID: 15885124). CD3 is composed of CD3  $\gamma$ ,  $\delta$ ,  $\epsilon$ , and  $\zeta$  chains (PMID: 1826255). It is expressed by thymocytes in a developmentally regulated manner, T cells, and some NK cells (PMID: 3289580). The TCR recognizes antigens bound to major histocompatibility complex (MHC) molecules. TCR-mediated peptide-MHC recognition is transmitted to the CD3 complex, leading to the intracellular signal transduction (PMID: 11985657).

## Storage

**Storage:**  
Store at 2-8°C. Avoid exposure to light. Stable for one year after shipment.

**Storage Buffer:**  
PBS with 0.09% sodium azide.

For technical support and original validation data for this product please contact:

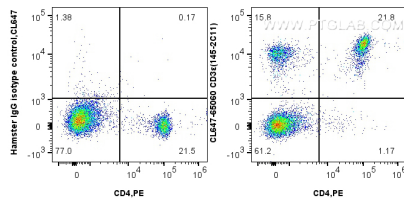
T: 4006900926

E: [Proteintech-CN@ptglab.com](mailto:Proteintech-CN@ptglab.com)

W: [ptgcn.com](http://ptgcn.com)

This product is exclusively available under Proteintech Group brand and is not available to purchase from any other manufacturer.

## Selected Validation Data



1x10<sup>6</sup> mouse splenocytes were surface stained with 0.25 ug CoraLite® Plus 647 Anti-Mouse CD3 $\epsilon$  (145-2C11) (CL647-65060, Clone:145-2C11) or 0.25 ug Isotype Control, and 0.25 ug PE Anti-Mouse CD4 (GK1.5) (PE-65104, Clone: GK1.5). Cells were not fixed.