

For Research Use Only

# CoraLite® Plus 647 Anti-Mouse CD31 (390)

Catalog Number: CL647-65058

1 Publications



## Basic Information

Catalog Number:

CL647-65058

Size:

100ug, 500 ug/ml

Source:

Rat

Isotype:

IgG2a, kappa

GenBank Accession Number:

BC008519

GeneID (NCBI):

18613

UNIPROT ID:

Q08481

Full Name:

platelet/endothelial cell adhesion molecule 1

Purification Method:

Affinity purification

CloneNo.:

390

Recommended Dilutions:

IF/ICC 1:50-1:500

Excitation/Emission maxima wavelengths:

654 nm / 674 nm

## Applications

Tested Applications:

IF/ICC, FC

Cited Applications:

IF

Species Specificity:

mouse

Positive Controls:

IF/ICC : bEnd.3 cells,

## Background Information

Platelet endothelial cell adhesion molecule-1 (PECAM-1, CD31) is a member of the immunoglobulin gene superfamily of cell adhesion molecules. CD31 is a transmembrane glycoprotein that is highly expressed on the surface of the endothelium, making up a large portion of its intracellular junctions. PECAM-1 is also present on the surface of hematopoietic cells and immune cells including platelets, monocytes, neutrophils, natural killer cells, megakaryocytes and some types of T-cell (PMID: 9011572). As well as its role in cell-cell adhesion, PECAM-1 functions as a signaling receptor, and is involved in important physiological events such as nitric oxide production, regulation of T-cell immunity and tolerance, leukocyte transendothelial migration and inflammation and angiogenesis (PMID: 21183735; 20978210; 17872453; 20634489).

## Notable Publications

Author	Pubmed ID	Journal	Application
Kai Yang	38544565	iScience	IF

## Storage

Storage:

Store at 2-8°C. Avoid exposure to light. Stable for one year after shipment.

Storage Buffer:

PBS with 0.1% sodium azide and 0.5% BSA, pH 7.3.

For technical support and original validation data for this product please contact:

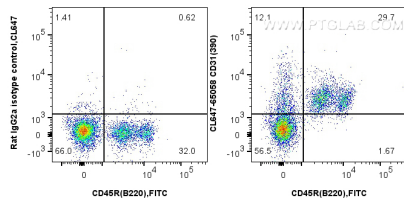
T: 4006900926

E: [Proteintech-CN@ptglab.com](mailto:Proteintech-CN@ptglab.com)

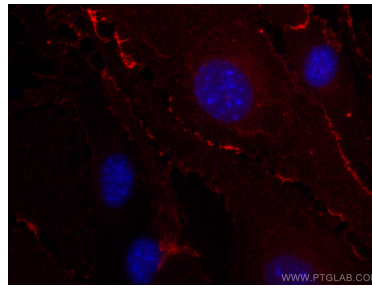
W: [ptgcn.com](http://ptgcn.com)

This product is exclusively available under Proteintech Group brand and is not available to purchase from any other manufacturer.

## Selected Validation Data



1x10<sup>6</sup> C57BL/6 mouse bone marrow cells were surface stained with 0.2 ug CoraLite® Plus 647 Anti-Mouse CD31 (CL647-65058, Clone:390), and 0.2 ug CoraLite® Plus 647 Rat IgG2a Isotype Control (2A3) (CL647-65209, Clone: 2A3), and 0.2 ug FITC Plus Anti-Mouse CD45R (B220) (RA3-6B2) (FITC-65139, Clone: RA3-6B2). Cells were not fixed.



Immunofluorescent analysis of (4% PFA) fixed bEnd.3 cells using CoraLite® Plus 647 CD31 antibody (CL647-65058, Clone: 390) at dilution of 1:100.