

CoraLite® Plus 647-conjugated CD20 Monoclonal antibody

Catalog Number: **CL647-60271**

Basic Information

Catalog Number:

CL647-60271

Size:

1000 µg/ml

Source:

Mouse

Isotype:

IgG2b

Immunogen Catalog Number:

AG17309

GenBank Accession Number:

BC002807

GeneID (NCBI):

931

UNIPROT ID:

P11836

Full Name:

membrane-spanning 4-domains,
subfamily A, member 1

Calculated MW:

297 aa, 33 kDa

Purification Method:

Protein A purification

CloneNo.:

4A7G3

Recommended Dilutions:

IF-P 1:50-1:500

**Excitation/Emission maxima
wavelengths:**

654 nm / 674 nm

Applications

Tested Applications:

IF-P

Species Specificity:

human

Positive Controls:

IF-P : human lung cancer tissue, human tonsillitis
tissue

Background Information

CD20 is a 33-37 kDa transmembrane phosphoprotein. CD20 is a B-lymphocyte surface molecule that is widely expressed during B-cell ontogeny, from early pre-B-cell developmental stages until final differentiation into plasma cells. CD20 functions as calcium-permeable cation channel. It is involved in the regulation of B-cell activation and proliferation. CD20 serves as a useful target for antibody-mediated therapeutic depletion of B-cells.

Storage

Storage:

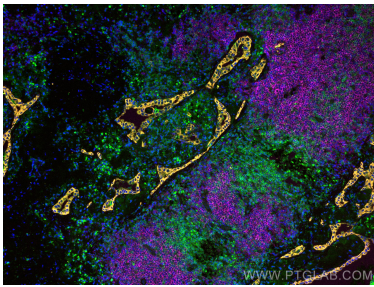
Store at -20°C. Avoid exposure to light. Stable for one year after shipment.

Storage Buffer:

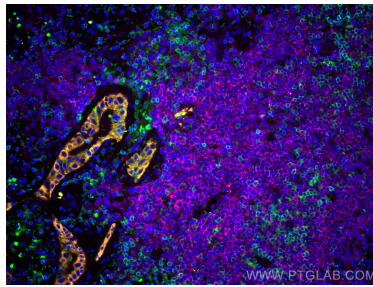
PBS with 50% Glycerol, 0.05% Proclin300, 0.5% BSA, pH 7.3.

Aliquoting is unnecessary for -20°C storage

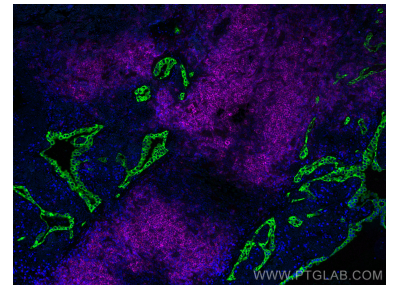
Selected Validation Data



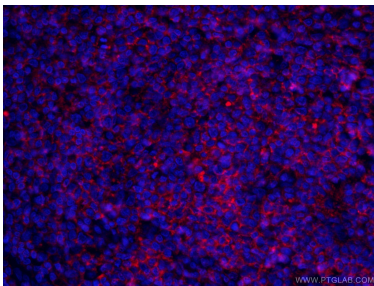
Immunofluorescent analysis of (4% PFA) fixed human lung cancer tissue using CoraLite® Plus 647 CD20 antibody (CL647-60271, Clone: 4A7G3) at dilution of 1:100, CoraLite®488 CD3 antibody (CL488-60181, Clone: 3F3A1, green), CoraLite®555 pan-keratin antibody (CL555-26411, orange).



Immunofluorescent analysis of (4% PFA) fixed human lung cancer tissue using CoraLite® Plus 647 CD20 antibody (CL647-60271, Clone: 4A7G3) at dilution of 1:100, CoraLite®488 CD3 antibody (CL488-60181, Clone: 3F3A1, green), CoraLite®555 pan-keratin antibody (CL555-26411, orange).



Immunofluorescent analysis of (4% PFA) fixed human lung cancer tissue using CoraLite® Plus 647 CD20 antibody (CL647-60271, Clone: 4A7G3) at dilution of 1:100, CoraLite®488 pan-keratin antibody (CL488-26411, green).



Immunofluorescent analysis of (4% PFA) fixed human tonsillitis tissue using CL647-60271 (CD20 antibody) at dilution of 1:100 and CoraLite488-Conjugated AffiniPure Goat Anti-Mouse IgG(H+L).