

For Research Use Only

CoraLite® Plus 647-conjugated CLEC12A Polyclonal antibody

Catalog Number:CL647-28627



Basic Information

Catalog Number:

CL647-28627

Source:

Rabbit

Isotype:

IgG

Immunogen Catalog Number:

AG27864

GenBank Accession Number:

BC063424

GeneID (NCBI):

160364

UNIPROT ID:

Q5QGZ9

Full Name:

C-type lectin domain family 12,

member A

Calculated MW:

31 kDa

Observed MW:

55-75 kDa

Purification Method:

Antigen affinity purification

Recommended Dilutions:

IF/ICC: 1:50-1:500

Excitation/Emission maxima

wavelengths:

654 nm / 674 nm

Applications

Tested Applications:

IF/ICC

Species Specificity:

human

Positive Controls:

IF/ICC : U-937 cells,

Background Information

CLEC12A, also known as CD371, MICL, DCAL-2 or CLL-1, is a type II transmembrane glycoprotein and a member of the C-type lectin superfamily (PMID: 30401586). This protein, which contains a single C-type lectin-like domain and a cytoplasmic immunoreceptor tyrosine-based inhibitory motif (ITIM), is related to LOX-1 and Dectin-1 and is variably spliced and highly N-glycosylated (PMID: 14739280). Its ITIM sequence recruits the tyrosine phosphatases SHP-1 and SHP-2 to negatively regulate Syk signaling. In humans, CLEC12A is mainly expressed on myeloid cells, being found on monocytes, granulocytes, macrophages and DC subsets, and at lower levels on CD4+ T cells (PMID: 32477350). The observed molecular weight of CLEC12A is between 40 and 75 kDa, which is much higher than the predicted molecular weight due to glycosylation (PMID: 14739280).

Storage

Storage:

Store at -20°C. Avoid exposure to light. Stable for one year after shipment.

Storage Buffer:

PBS with 50% glycerol, 0.05% Proclin300, 0.5% BSA, pH7.3

Aliquoting is unnecessary for -20°C storage

For technical support and original validation data for this product please contact:

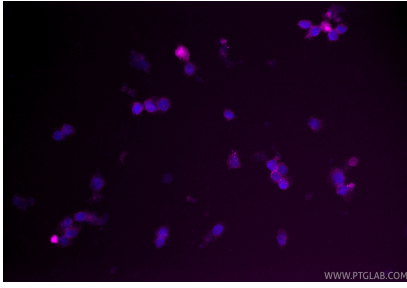
T: 4006900926

E: Proteintech-CN@ptglab.com

W: ptgcn.com

This product is exclusively available under Proteintech Group brand and is not available to purchase from any other manufacturer.

Selected Validation Data



Immunofluorescent analysis of (4% PFA) fixed U-937 cells using Coralite® Plus 647 CLEC12A antibody (CL647-28627) at dilution of 1:200.