

For Research Use Only

CoraLite® Plus 647-conjugated Ki-67 Polyclonal antibody

Catalog Number:CL647-28074



Basic Information

Catalog Number:

CL647-28074

Size:

1000 ug/ml

Source:

Rabbit

Isotype:

IgG

Immunogen Catalog Number:

AG27894

GenBank Accession Number:

NM_001081117

GeneID (NCBI):

17345

UNIPROT ID:

E9PVX6

Full Name:

antigen identified by monoclonal
antibody Ki 67

Calculated MW:

351 kDa

Purification Method:

Antigen affinity purification

Recommended Dilutions:

IF-P 1:50-1:500

IF/ICC 1:50-1:500

Excitation/Emission maxima
wavelengths:

654 nm / 674 nm

Applications

Tested Applications:

IF/ICC, IF-P, FC (Intra)

Species Specificity:

mouse

Positive Controls:

IF-P : mouse colon tissue,

IF/ICC : HeLa cells,

Background Information

The Ki-67 protein (also known as MKI67) is a cellular marker for proliferation. Ki67 is present during all active phases of the cell cycle (G1, S, G2 and M), but is absent in resting cells (G0). Cellular content of Ki-67 protein markedly increases during cell progression through S phase of the cell cycle. Therefore, the nuclear expression of Ki67 can be evaluated to assess tumor proliferation by immunohistochemistry.

Storage

Storage:

Store at -20°C. Avoid exposure to light. Stable for one year after shipment.

Storage Buffer:

PBS with 50% Glycerol, 0.05% Proclin300, 0.5% BSA, pH 7.3.

Aliquoting is unnecessary for -20°C storage

For technical support and original validation data for this product please contact:

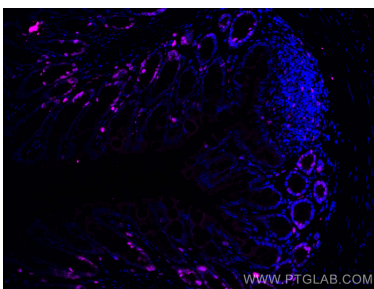
T: 4006900926

E: Proteintech-CN@ptglab.com

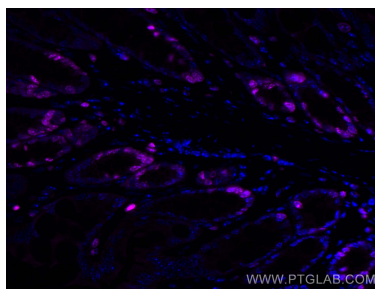
W: ptgcn.com

This product is exclusively available under Proteintech Group brand and is not available to purchase from any other manufacturer.

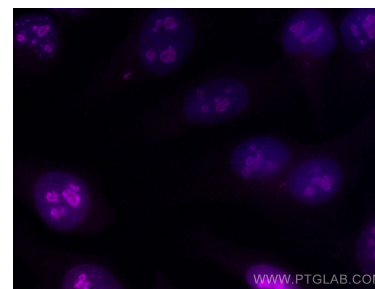
Selected Validation Data



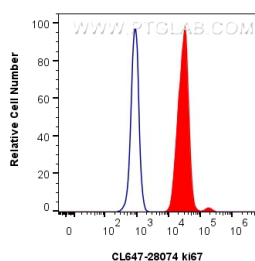
Immunofluorescent analysis of (4% PFA) fixed mouse colon tissue using CoraLite® Plus 647 ki67 antibody (CL647-28074) at dilution of 1:200.



Immunofluorescent analysis of (4% PFA) fixed mouse colon tissue using CoraLite® Plus 647 ki67 antibody (CL647-28074) at dilution of 1:200.



Immunofluorescent analysis of (4% PFA) fixed HeLa cells using CoraLite® Plus 647 ki67 antibody (CL647-28074) at dilution of 1:200.



1×10^6 NIH/3T3 cells were intracellularly stained with 0.4 μ g CoraLite® Plus 647-conjugated Ki-67 Polyclonal antibody (CL647-28074)(red), or 0.4 μ g CoraLite® Plus 647-conjugated Rabbit IgG control Rabbit PolyAb (CL647-30000) (blue). Cells were fixed and permeabilized with Transcription Factor Staining Buffer Kit (PF00011).