

For Research Use Only

CoraLite® Plus 647-conjugated IL-22RA2 Polyclonal antibody



Catalog Number: CL647-22861

Basic Information

Catalog Number: CL647-22861	GenBank Accession Number: BC125167	Purification Method: Antigen affinity purification
Size: 1000 µg/ml	GeneID (NCBI): 116379	Excitation/Emission maxima wavelengths: 654 nm / 674 nm
Source: Rabbit	UNIPROT ID: Q969J5	
Isotype: IgG	Full Name: interleukin 22 receptor, alpha 2	
Immunogen Catalog Number: AG18854	Calculated MW: 263 aa, 31 kDa	
	Observed MW: 27 kDa	

Applications

Tested Applications:
FC (Intra)

Species Specificity:
human

Background Information

Interleukin-22 receptor subunit alpha-2 (IL22RA2, also known as CRF2-10) is a soluble member of the type II cytokine receptor family. Through binding to IL22, IL22RA2 prevents the interaction of IL22 with the functional IL22-R complex and blocks the activity of IL22 (in vitro). IL22RA2 may play an important role as an IL22 antagonist in the regulation of inflammatory responses. It has been described that human IL22RA2 gene encodes three alternatively spliced isoforms called CRF2-10L, CRF2-10, and CRF2-10s, with molecular weights of 31 kDa, 27 kDa, and 15 kDa, respectively.

Storage

Storage:
Store at -20°C. Avoid exposure to light. Stable for one year after shipment.

Storage Buffer:
PBS with 50% Glycerol, 0.05% Proclin300, 0.5% BSA, pH 7.3.

Aliquoting is unnecessary for -20°C storage

For technical support and original validation data for this product please contact:

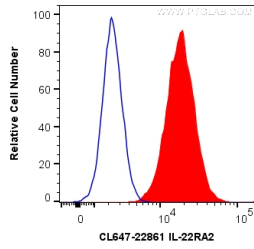
T: 4006900926

E: Proteintech-CN@ptglab.com

W: ptgcn.com

This product is exclusively available under Proteintech Group brand and is not available to purchase from any other manufacturer.

Selected Validation Data



1X10⁶ HeLa cells were intracellularly stained with 0.2 ug Coralite® Plus 647 Anti-Human IL-22RA2 (CL647-22861) (red), or 0.2 ug isotype control (blue). Cells were fixed with 4% PFA and permeabilized with Flow Cytometry Perm Buffer (PF00011-C).