

For Research Use Only

CoraLite® Plus 647-conjugated ATP1B2 Polyclonal antibody

Catalog Number: CL647-22338



Basic Information

Catalog Number:

CL647-22338

Concentration:

1000 ug/ml

Source:

Rabbit

Isotype:

IgG

Immunogen Catalog Number:

AG17818

GenBank Accession Number:

BC126175

GeneID (NCBI):

482

UNIPROT ID:

P14415

Full Name:

ATPase, Na⁺/K⁺ transporting, beta 2 polypeptide

Calculated MW:

290 aa, 33 kDa

Observed MW:

45-65 kDa

Purification Method:

Antigen affinity purification

Recommended Dilutions:

IF-P 1:50-1:500

Excitation/Emission maxima wavelengths:

654 nm / 674 nm

Applications

Tested Applications:

IF-P

Species Specificity:

human, mouse, rat

Positive Controls:

IF-P: mouse brain tissue,

Background Information

ATP1B2 is the β 2 subunit of Na⁺/K⁺-ATPase which is an essential membrane-bound enzyme responsible for the transport of Na⁺ and K⁺ in most eukaryotic cells. ATP1B2 is also called the adhesion molecule on glia (AMOG) and it is highly expressed in normal glia. It is a heavily glycosylated protein that plays a role in cellular adhesion in the CNS. Recently differential expression of ATP1B2 has been found in some glioneuronal tumors (PMID: 23887941, 19371356). This antibody recognizes the endogenous ATP1B2 protein in human brain. The bands between 45 kDa and 65 kDa represent the glycosylated forms of ATP1B2 in different levels (PMID: 8918259).

Storage

Storage:

Store at -20°C. Avoid exposure to light. Stable for one year after shipment.

Storage Buffer:

PBS with 50% Glycerol, 0.05% Proclin300, 0.5% BSA, pH 7.3.

Aliquoting is unnecessary for -20°C storage

For technical support and original validation data for this product please contact:

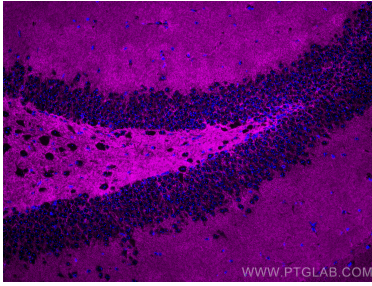
T: 4006900926

E: Proteintech-CN@ptglab.com

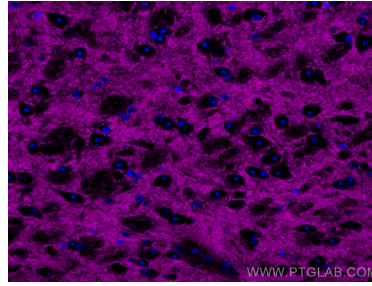
W: ptgcn.com

This product is exclusively available under Proteintech Group brand and is not available to purchase from any other manufacturer.

Selected Validation Data



Immunofluorescent analysis of (4% PFA) fixed paraffin-embedded mouse brain tissue using CoraLite® Plus 647 ATP1B2 antibody (CL647-22338) at dilution of 1:200. Heat mediated antigen retrieval with Tris-EDTA buffer (pH 9.0).



Immunofluorescent analysis of (4% PFA) fixed paraffin-embedded mouse brain tissue using CoraLite® Plus 647 ATP1B2 antibody (CL647-22338) at dilution of 1:200. Heat mediated antigen retrieval with Tris-EDTA buffer (pH 9.0).